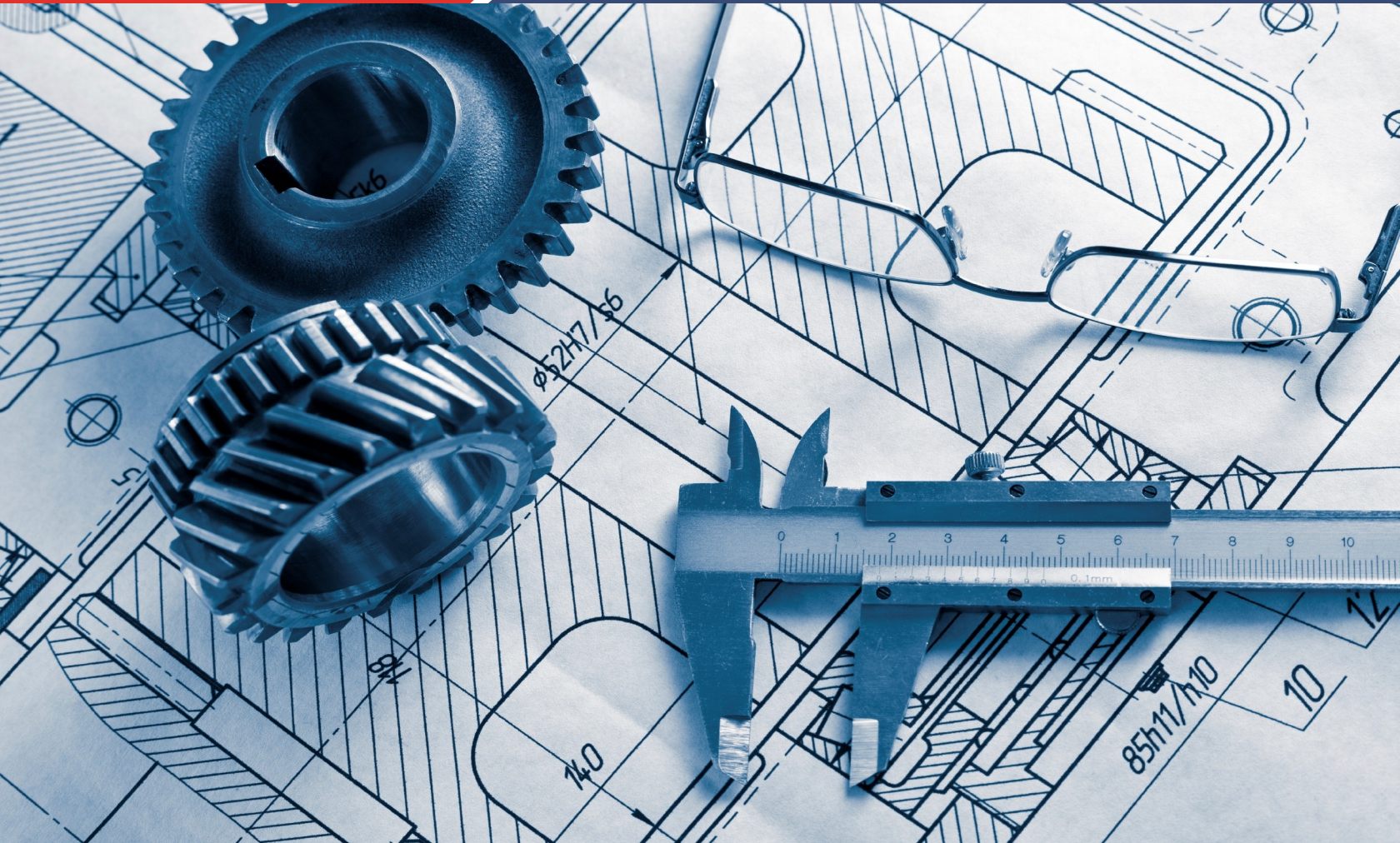


Toothed Punch Units and Tooling	3-9
Zero Clearance Punch Units and Tooling	10-14
Draw Rollers and Sealing Rolls	15-19
Unwind Parts	20-22
Belting	23-25
Knives, Blades, Slitters, Perforating Blades & Gusset Parts	26-30
Teflon Fabric and Tape	31-35
Water Strippers	36
Heaters and Thermocouples	37-39
Hot Knives, Seal Blades & Seal Bars	40-42
Slit Seals	43
Anti-Static Parts	44-45
Vacuum Arms, Side Weld and Wicket Parts	46-47
Web Control	48-50
Trim Re-winders	51
Punch Slug Vacuum System	52
Extrusion Cleaning Products	53-54
Heat Seal Dies	55-56



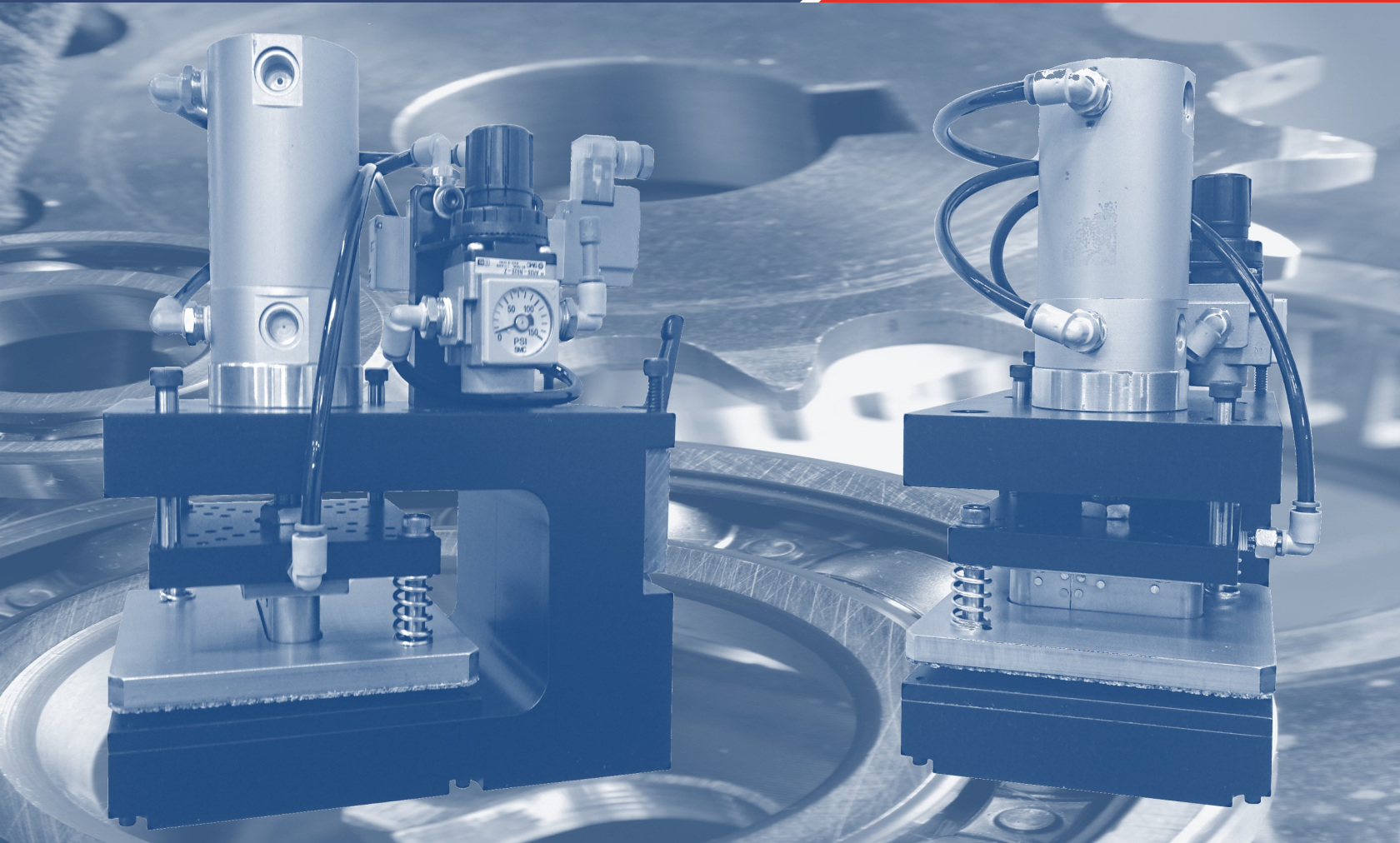
Bag Machine Parts and its parent company, Modern Manufacturing Services, LLC, pride themselves on manufacturing or acquiring the finest replacement parts and accessories for the flexible packaging converting industry.

We understand that downtime is delayed or even lost revenue. With our broad inventory of parts and a community of dedicated suppliers, we can quickly turnaround all orders. This will enable you to meet your production and turnaround goals, thereby meeting your customer's expectations.

We also have a staff of on-site engineers and fabrication equipment, to custom make any part you may require, including parts for our competitor's equipment.

All of the parts and accessories we provide, are manufactured to the tightest tolerances in the industry. Bag machine Parts and Modern Manufacturing Services, LLC., are focused on providing knowledgeable, friendly and efficient customer support.

Let us become your one-stop source for bag machine and flexible packaging parts and accessories.



Bag Machine Parts, a subsidiary of Modern Manufacturing Services, LLC, manufactures a broad array of punch units and tooling to meet any converting application. Our punch units are engineered to the tightest tolerances and specifications.

We can also manufacture “Cross-Bank” punch solutions. These custom engineered solutions would be designed/built to the type of converting unit being used and the application being run.

Note: a photo of the part is always helpful with our researching process.

The types of toothed and cross-bank punch units available include:

- ✓ Round Hole Punch units with 3 inch throats
- ✓ Handle Punch units 3 inch throats
- ✓ Wicket Punch Units 3 in throat
- ✓ Cross-bank Punch units: 30”, 41”, 56”

Punch Units

Part #	General Description
AM05050-24V	Saw Tooth Punch Head (24V) for small round hole, hanger hole, OSHA, and Top Hat punching
AM05050-110V	Saw Tooth Punch Head (110V) for small round hole, hanger hole, OSHA, and Top Hat punching
AM05051-24V	Saw Tooth Punch Head, 4" x 4" (24V) for small handle hole punches and others of all shapes
AM05051-110V	Saw Tooth Punch Head, 4" x 4" (110V) for small handle hole punches and others of all shapes
AM05052-24V	Saw Tooth Round Hole Punch Head 1/8" - 5/8" (24 V)
AM05052-110V	Saw Tooth Round Hole Punch Head 1/8" - 5/8" (110 V)
AM05043	Wicket Punch Set for punching 2 holes at time for wicket production

Round Toothed Punches

Part #	Diameter	Length	Mount Threads	Description
P-101A	1/8"	1-1/4"	1/4-28 Mount threads	1/8" X 1 1/4" Hole Punch
P-3	1/8"	1-1/2"	1/4-28 Mount threads	1/8" X 1-1/2" Sawtooth Hole Punch
P-8	5/32"	2"	1/4-28 Mount threads	5/32" X 2" Sawtooth Hole Punch
P-10	3/16"	2"	1/4-28 Mount threads	3/16" x 2" Sawtooth hole punch
P-120	3/16"	1-1/4"	M8x1.25 Mount threads	3-16" X 1 1/4" Hole Punch - Vent - 8Mm
P-11	1/4"	1-1/4"	1/4-28 Mount threads	1/4" X 1 1/4" Hole Punch
P-14	1/4"	1-1/2"	1/4-28 Mount threads	1/4" X 1 1/2" Sawtooth Hole Punch
P-15	1/4"	1-1/2"	5/6-24 Mount threads	1/4" X 1 1/2" Hole Punch W/ 5/16-24Mt
P-16	1/4"	2"	1/4-28 Mount threads	1/4" X 2" Sawtooth Hole Punch
P-20	5/16"	1-1/2"	1/4-28 Mount threads	5/16" X 1 1/2" Sawtooth Hole Punch
P-21	5/16"	2"	1/4-28 Mount threads	5/16" X 2" Hole Punch
P-22	3/8"	1-1/4"	1/4-28 Mount threads	3/8" X 1 1/4" Sawtooth Hole Punch
P-25	3/8"	1-1/2"	1/4-28 Mount threads	3/8" X 1 1/2" Sawtooth Hole Punch
P-26	3/8"	2"	1/4-28 Mount threads	3/8" X 2" Sawtooth Hole Punch
P-30	1/2"	1-1/4"	1/4-28 Mount threads	1/2" X 1 1/4" Hole Punch
P-32	1/2"	2"	1/4-28 Mount threads	1/2" X 2" Hole Punch
P-33	5/8"	1-1/4"	1/4-28 Mount threads	5/8" D X 1-1/4" H Hole Punch
P-35	5/8"	1-1/2"	1/4-28 Mount threads	5/8" X 1 1/2" Sawtooth Hole Punch
P-35D	5/8"	1-1/2"	5/6-24 Mount threads	5/8" X 1 1/2" Hole Punch W/ 5/16-24 Mt
P-38	3/4"	1-1/4"	1/4-28 Mount threads	3/4" X 1 1/4" Hole Punch
P-42	1"	5/8"	5/16" Thru Hole Mounting	1" X 5/8" Sawtooth Hole Punch
P-43	1-1/4"	5/8"	5/16" Thru Hole Mounting	1 1/4" X 5/8" Sawtooth Hole Punch
P-69	1-1/2"	5/8"	5/16" Thru Hole Mounting	1 1/2" X 5/8" Sawtooth Hole Punch
P-45	1-1/2"	1-1/4"	1/4-28 Mount threads	1 1/2" X 1 1/4" Sawtooth Hole Punch
P-79	1-3/4"	5/8"	5/16" Thru Hole Mounting	1 3/4" X 5/8" Hole Punch
P-49	2"	5/8"	5/16" Thru Hole Mounting	Round Punch, 2" Dia. X 5/8" H



P-3 Punch



P-20 Punch



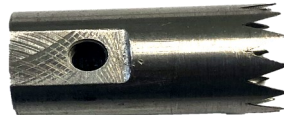
P-30 Punch

Round Toothed Punches - Side Vented

Part #	Diameter	Length	Mount Threads	Description
P-23V	3/8"	1 1/4"	1/4-28 Mount threads with vented 10/32 straight threaded hole for slug ejection	3/8" X 1 1/4" Hole Punch Vented
P-30V	1/2"	1 1/4"	1/4-28 Mount threads with vented 10/32 straight threaded hole for air slug ejection	1/2" X 1 1/4" Hole Punch Vented
P-34V	5/8"	3/4"	1/4-28 Mount threads with vented 10/32 straight threaded hole for air slug ejection	5/8" X 3/4" Hole Punch Vented



P-23V Vented Punch



P-34 Vented Punch



P-34V Vented Punch

Round Toothed Punches - Titanium Coated

Part #	Diameter	Length	Mount Threads	Description
P-16T	1/4"	2"	1/4-28 Mount threads	1/4" x 2" TI Coated Punch
P-25T	3/8"	1-1/2"	1/4-28 Mount threads	3/8" X 1 1/2" Hole Punch - Titanium
P-26T	3/8"	2"	1/4-28 Mount threads	3/8" X 2" Sawtooth Hole Punch - Titanium
P-78T	7/16"	2"	1/4-28 Mount threads	7/16" X 2" Hole Punch - Titanium
P-31T	1/2"	1-1/2"	1/4-28 Mount threads	1/2" X 1-1/2" Hole Punch - Titanium
P-33T	5/8"	1-1/4"	1/4-28 Mount threads	5/8" X 1 1/4" Hole Punch - Titanium
P-35T	5/8"	1-1/2"	1/4-28 Mount threads	5/8" X 1-1/2" Hole Punch - Titanium
P-39T	3/4"	1-1/2"	1/4-28 Mount threads	3/4" X 1 1/2" Hole Punch - Titanium
P-69T	1 1/2"	5/8"	5/16" Thru Hole Mounting	1 1/2" X 5/8" Hole Punch - Titanium
P-45T	1 1/2"	1-1/4"	1/4-28 Mount threads	1 1/2" X 1 1/4" Hole Punch - Titanium

Titanium punches are coated for extra durability



P-16T Titanium Coated Punch



P-31T Titanium Coated Punch



P-69T Titanium Coated Punch

Round Toothed Punches - Butterfly

Part #	Diameter	Length	Mount Threads	Description
P-5A	1/8"	2"	1/4-28 Mount threads	1/8" x 2" Sawtooth Hole Punch - Butterfly
P-8A	5/32"	2"	1/4-28 Mount threads	5/32" X 2" Sawtooth Punch- Butterfly
P-121	3/16"	1-1/4"	M8x1.25 Mount threads	3-16" X 1 1/4" Hole Punch - Butterfly - 8Mm
P-10A	3/16"	2"	1/4-28 Mount threads	3/16" x 2" Sawtooth Hole Punch - Butterfly
P-12	1/4"	1-1/4"	1/4-28 Mount threads	1/4" x 1 1/4" Hole Punch with Butterfly
P-14B	1/4"	1-1/2"	5/16-24 Mount threads	1/4" X 1 1/2" Hole Punch with Butterfly, 5/16" Thread
P-17	1/4"	2"	1/4-28 Mount threads	1/4" X 2" Butterfly Hole Punch
P-17T	1/4"	2"	1/4-28 Mount threads—	1/4"X 2" Butterfly Hole Punch - Gold hard coated
P-22A	3/8"	1-1/4"	1/4-28 Mount threads	3/8" X 1 1/4" Hole Punch—Butterfly
P-27	3/8"	2"	1/4-28 Mount threads	3/8" X 2" Sawtooth Hole Punch - Butterfly
P-78A	7/16"	2"	1/4-28 Mount threads	7/16" X 2" Butterfly Hole Punch
p-30A	1/2"	1-1/4"	1/4-28 Mount threads	1/2" x 1 1/4" Sawtooth Hole Punch—Butterfly
P-32B	1/2"	2"	1/4-28 Mount threads	1/2" X 2 " Sawtooth Hole Punch - Butterfly

A Butterfly punch has 2 uncut tabs 180° apart so slug is not removed



P-5A
Butterfly Punch



P-17
Butterfly Punch



P-78A
Butterfly Punch

Round Toothed Punches - Pin Punch

Part #	Diameter	Length	Mount Threads	Description
P-109A	1/16"	1-1/2"	1/4-28 Mount threads	1/16" X 1 1/2" Pin Punch
P-109	1/16"	2"	1/4-28 Mount threads	1/16" X 1 1/4" Pin Punch - 8Mm Thread
P-109C	1/16"	1-1/4"	M8x1.25 Mount threads	1/16" X 1 1/4" Pin Punch - 8Mm Thread
P-109D	1/16"	2"	M8x1.25 Mount threads	1/16" X 2" Pin Punch - 8mm - 1.25 Thread



P-109C
Pin Punch



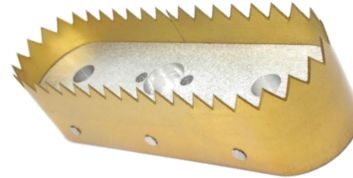
P-109
Pin Punch

Toothed Punches - Handle Hole

Part #	Size	General Description
<i>BMP-HH-3 x 1</i>	3" x 1"	Oval Handle Hole Punch 3" x 1"
<i>BMP-HH-3 x 1-C</i>	3" x 1" "C" Cut	Oval Handle Hole Punch 3" x 1" "C" Cut (C-Cut means there is an uncut area)
<i>BMP-HH-3 1/2 x 1</i>	3-1/2" x 1"	Oval Handle Hole Punch 3-1/2" x 1"
<i>BMP-HH-3 1/2 x 1-C</i>	3-1/2" x 1" "C" Cut	Oval Handle Hole Punch 3-1/2" x 1" "C" Cut (C-Cut means there is an uncut area)



BMP-HH-3-1/2 x 1-C
Handle Hole Punch



BMP-HH-3-1/2 x 1
Handle Hole Punch

Punch Tooling - Stripping Pins

Part #	Size	General Description
<i>P-SP2</i>	5/32" Stripping Pin	5/32" Slug Ejector pin for slug removal without air for punch sizes of 1/8" and 3/16" (Note: Requires 2" punch length)
<i>P-SP</i>	1/4" Stripping Pin	1/4" Slug Ejector pin for slug removal without air for punch sizes of 3/16" up to 7/16" (Note: Requires 2" punch length)
<i>P-SPR</i>		Springs for Stripping Pins



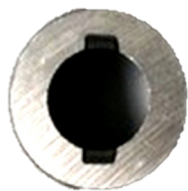
P-SP2
Stripping Pin



P-SP
Stripping Pin

Continuous Motion Ball Punches & Die Buttons

Part #	Size	General Description
P-58	1/8" Die Button	Die Button for Continuous Motion punching
BP-04	1/8" Ball Punch W/Spring	Ball Punch With Spring for Continuous Motion punching
P-52	1/4" Die Button	Die Button for Continuous Motion punching
BP-08	1/4" Ball Punch	Ball Punch for Continuous Motion punching
P-75	5/16" Die Button	Die Button
BP-10	5/16" Ball Punch	Ball Punch for Continuous Motion punching
P-54	3/8" Die Button	Die Button for Continuous Motion punching
BP-12	3/8" Ball Punch	Ball Punch for Continuous Motion punching
BP-14	7/16" Ball Punch	Ball Punch
P-52D 1/4"	1/4" Die Button Double Butterfly	Die Button Double Butterfly (has 4 uncut tabs 90° apart so slug is
P-53	1/4" Die Button W/Butterfly	Die Button W/Butterfly (has 2 uncut tabs 180° apart so slug is
P-75A	5/16" Die Button W/Butterfly	Die Button W/Butterfly (has 2 uncut tabs 180° apart so slug is
P-55	3/8" Die Button W/Butterfly	Die Button W/Butterfly (has 2 uncut tabs 180° apart so slug is
P-57	7/16" Die Button W/Butterfly	Die Button W/Butterfly (has 2 uncut tabs 180° apart so slug is
MAL-50	1/8" Mal Die Button	Mal Die Button for Continuous Motion punching
MAL-06	1/8" Mal Punch Head	Mal Punch Head for Continuous Motion punching
MAL-07	3/16" Mal Punch Head	Mal Punch Head for Continuous Motion punching
MAL-52	1/4" Mal Die Button	Mal Die Button for Continuous Motion punching
MAL-08	1/4" Mal Punch Head	Mal Punch Head for Continuous Motion punching
MAL-10	5/16" Mal Punch Head	Mal Punch Head
MAL-54	3/8" Mal Die Button	Mal Die Button for Continuous Motion punching
MAL-52A	1/4" Mal Die Button W/Butterfly	Mal Die Button W/Butterfly (has 2 uncut tabs 180° apart so slug is not removed) for Continuous Motion punching



P-55
Die Button-Butterfly



MAL-P-52A
MAL Die Button-Butterfly



P-75
Die Button



P-58
1/8" Die Button



P-52
1/4" Die Button



MAL-06
1/8" Punch Head

Continuous Motion Components

Part #	Short Description	General Description
<i>BP-C</i>	Continuous Ball Punch Cylinder	Continuous Motion ball and die punch air cylinder-repairable
<i>BP-CK</i>	Ball Punch Cylinder Repair Kit	Continuous Motion ball and die punch air cylinder repair kit
<i>BMP-14002-M-J</i>	Mini Male Plug	Mini Male Plug, for Scheldahl Ball Punch
<i>BMP-Screw</i>	Ball Punch Elevating Screw	Continuous Motion ball and die punch Elevating Screw
<i>BP-S</i>	Ball Punch Springs - Large	Continuous Motion ball and die punch Springs - Large
<i>BP-SS</i>	Ball Punch Springs - Small	Continuous Motion ball and die punch Springs - Small
<i>BP-CS</i>	Continuous Cylinder - Spring	Continuous Motion ball and die punch Cylinder - Spring
<i>BP-C-Lock Nut</i>	Lock Nut for Ball Punch Cylinder	Continuous Motion ball and die punch Lock Nut for Ball Punch Cylinder (3/4" x 1")
<i>35A-AAA-DDFA-1BA</i>	Mac Valve - Solenoid For Ball Punch	Continuous Motion ball and die punch Mac Valve - Solenoid, 24V
<i>MAL-ASSEMBLY8</i>	MAL Complete Housing Assembly	Continuous Motion ball and die punch MAL Complete Housing Assembly for 1/4" punch (MAL-8)
<i>MAL-O-Ring</i>	O-Ring For Mal Punch	Continuous Motion ball and die punch O-Ring For Mal Punch
<i>MAL-Piston</i>	Piston - Mal Punch	Continuous Motion ball and die punch Piston - Mal Punch
<i>MAL-Spring</i>	Spring For Mal Punch	Continuous Motion ball and die punch Spring For Mal Punch



Mal-O-Ring



BP-C-Lock Nut



BMP-14002-M-J



MAL-Spring

Tooling - Air Cylinders & Accessories

Part #	General Description
<i>S-44330</i>	Air Cylinder, 3/4" Bore x 3/4" Stroke - Blow Thru
<i>C-208</i>	Air Cylinder, 3/4" Bore x 3/4" Stroke - Wicket Blow Thru
<i>C-208-NR-Hex</i>	Air Cylinder, 3/4" Bore x 3/4" Stroke - Wicket Non-Rotating
<i>500357</i>	Air Cylinder, 3/4" Bore x 7/8" Stroke, DA - Blow Thru
<i>PS-754B</i>	Air Cylinder, 1-1/16" Bore x 1" Stroke - Non-Rotating
<i>SSR-20-1</i>	Air Cylinder, 1-1/4" Bore x 1" Stroke - Cross Bank
<i>500277</i>	Air Cylinder, 40 Bore x 25mm Stroke-Blow Thru
<i>C-209</i>	Cylinder Repair Kit - Wicket Blow Through
<i>C-209-Solid</i>	Cylinder Repair Kit - Wicket Solid
<i>C-609</i>	Brass Air Cylinder Repair Kit
<i>500006</i>	Solenoid Valve, 3-Way W/Conn.
<i>500078</i>	Solenoid Valve, 3-Way, 120VAC
<i>500253</i>	Solenoid Valve, 4-Way Valve, 24VDC, Small



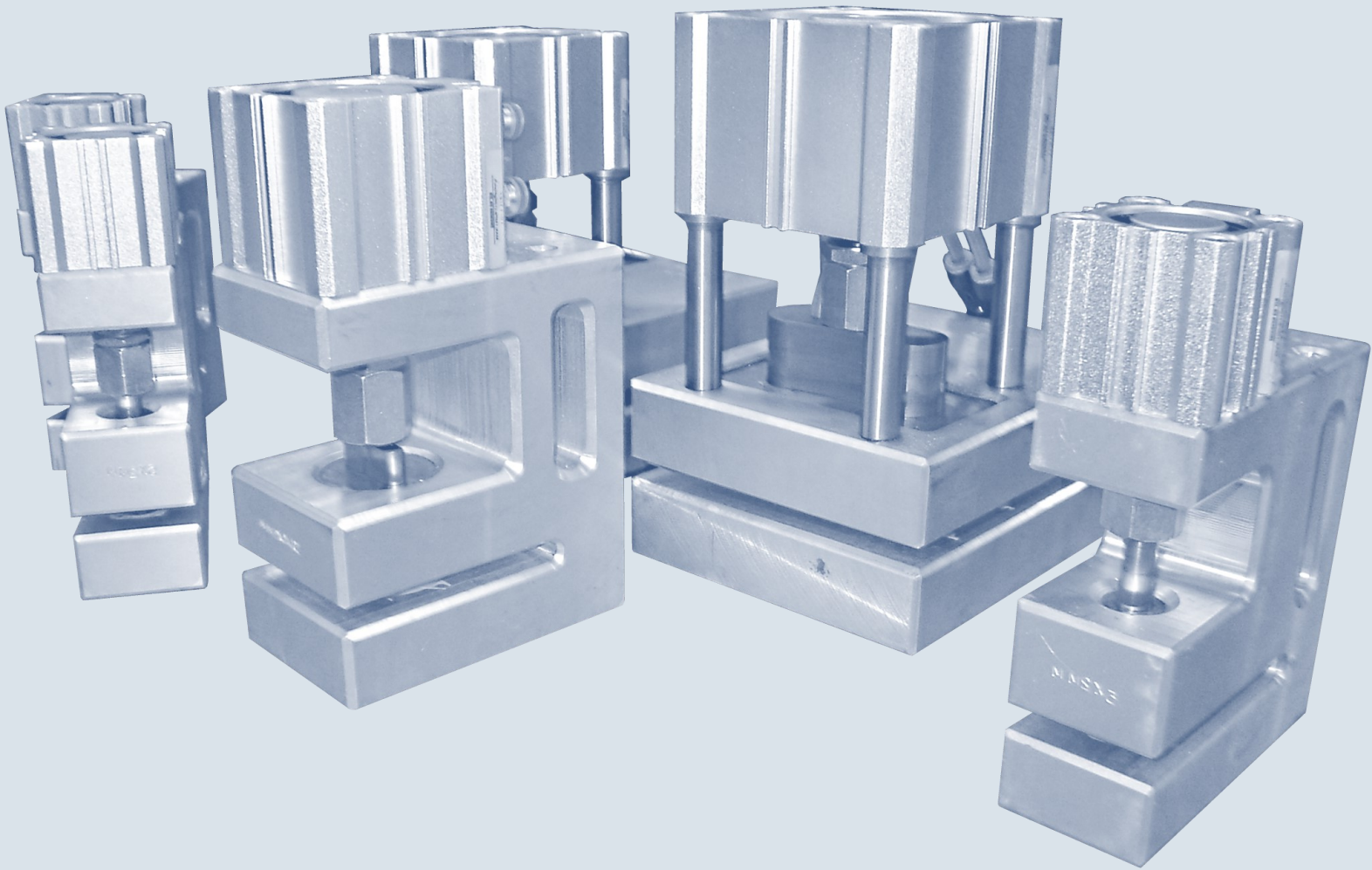
C-209
Solid Wicket Cylinder



PS-754B
Cylinder



SSR-20-1
Cross Bank Cylinder



Zero clearance punches have grown in popularity and have become common place in most converting lines. Certainly convenience is one of the main advantages of these types of punches. No alignment is necessary. Each head is designed for the punch shape required, simply mount to your existing machine and run

These punches work with most converting films, including:

- ✓ Poly/Poly Lamination
- ✓ Pouch Laminations
- ✓ Coextruded Films
- ✓ Medium to High Density Poly

There are optional mounting carriages available to seamlessly integrate into your existing converting lines. They provide clean punches, every time and they have a relatively “low cost of ownership”.

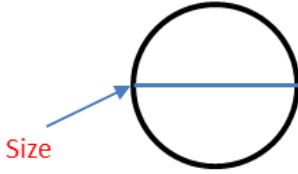
Zero clearance punches available in:

- ✓ Standard throat depth 1.77” (45 MM)
- ✓ 3.00” (76 MM) throat depth
- ✓ 6.00” (152 MM) throat depth
- ✓ 8.00” (203 MM) throat depth
- ✓ Specialty cross web options

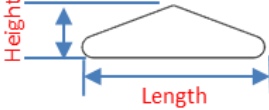
We have a large selection of sizes in house, ready to ship for quick turnaround.

These C-frame punch units are for material ranging from 2 to 8 mils in width

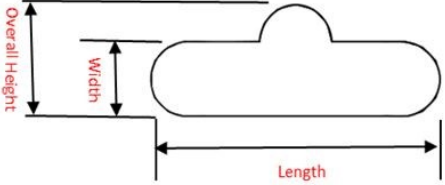
Zero Clearance Punch Tooling - Round Hole

Part #	Size	General Description
401163P	3/16 inch	<p>Round Punch Shape</p>  <p>Note: Images are not to scale.</p>
400580P	1/4 inch	
401239P	5/16 inch	
400644P	3/8 inch	
403336P	6 mm	
400307P	10 mm	
400304P	15 mm	
400305P	25 mm	
400306P	35 mm	

Zero Clearance Punch Tooling - OSHA/Angle

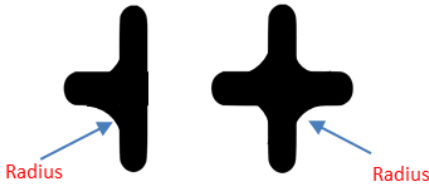
Part #	Height	Length	General Description
400323P	8.5 mm	18.5 mm	<p>This punch provides a hole for hanging pouches for in-store display.</p> <p>OSHA/Angle Hole Punch Shape</p>  <p>Note: Images are not to scale.</p>
400325P	9.6 mm	31.8 mm	
400324P	11 mm	31 mm	

Zero Clearance Punch Tooling - Euro Hanger

Part #	Width	Overall Height	Length	General Description
401754P	.125 inch	.188 inch	1.125 inch	<p>This punch provides a hole for hanging pouches for In-store display.</p> <p>Euro Hanger Punch Shape</p>  <p>Note: Images are not to scale.</p>
401755P	.188 inch	.25 inch	1 inch	
402827P	.188 inch	.313 inch	1.188 inch	
402547P	.188 inch	.313 inch	1.25 inch	
401865P	.188 inch	.405 inch	1.125 inch	
400497P	.25 inch	.375 inch	1 inch	
401142P	.25 inch	.375 inch	1.25 inch	
400310P	5 mm	8 mm	25 mm	
402560P	5.08 mm	9.83mm	34.01 mm	
400311P	6 mm	9 mm	25 mm	
400312P	6 mm	9 mm	30 mm	
400313P	6 mm	9 mm	32 mm	
400351P	6.4 mm	7.9 mm	38.1 mm	
400314P	7 mm	10 mm	32mm	
400315P	7 mm	10 mm	35mm	

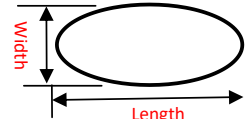
These C-frame punch units are for material ranging from 2 to 8 mils in thickness

Zero Clearance Punch Tooling - Corner Round

Part #	Radius	General Description
401569P	3/16 inch	<p>These punches provides rounded corners on finished bags, pouches, etc..</p> <p style="text-align: center;">Corner Round Punch Shape</p> 
401019P	1/4 inch	
402295P	1/4 inch, Half	
402277P	3/8 inch	
401567P	1/2 inch	
402296P	3/4 inch, Half	
400353P	5 mm	
403343P	6 mm	
400382P	8 mm	

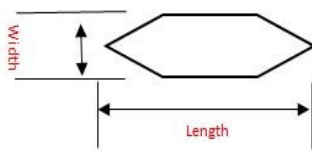
Note: Images are not to scale.

Zero Clearance Punch Tooling - Oval

Part #	Width	Length	General Description
400563P	.125 inch	1 inch	<p>All punches have the standard 45 mm throat depth. Other throat depths are available upon request.</p> <p style="text-align: center;">Oval Handle Hole Punch Shape</p> 
402328P	.25 inch	.688 inch	
402991P	7 mm	15 mm	
403125P	16 mm	38 mm	
400308P	25 mm	50 mm	
400309P	55 mm	100 mm	

Note: Images are not to scale.

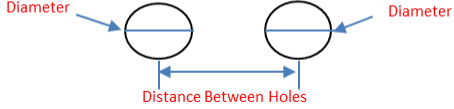
Zero Clearance Punch Tooling - Tear Notch

Part #	Width	Length	General Description
402578P	1/16 inch	3/8 inch	<p>This punch provides an easy tear feature to open a pouch, bag, etc.</p> <p style="text-align: center;">Tear Notch Hole Punch Shape</p> 
400327P	2 mm	4mm	
400326P	2 mm	5mm	
400333P	2 mm	6.4 mm	
402542P	2 mm	7 mm	
402659P	2 mm	11 mm	

Note: Images are not to scale.

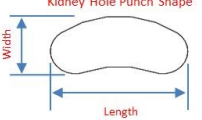
These C-frame punch units are for material ranging from 2 to 8 mils in thickness

Zero Clearance Punch Tooling - Finger Hole

Part #	Diameter	Distance Between	General Description
402036P	3/4 inch	2-1/8 inch	This C-Frame punch unit is for materials from 2 to 8 mils in thickness. It provides 2 finger holes at the top of bags typically found in clothing stores, etc. Finger Hole Punch Shape 
402743P	1 inch	3-7/8 inch	
401904P	1 inch	4-3/32 inch	
401414P (Egg Shaped)	1 x 1.5	1.5 inch	
401761P	1-5/8 inch	3-3/8 inch	
400354P	25 mm	86.4mm	

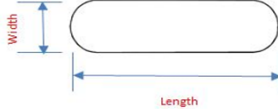
Note: Images are not to scale.

Zero Clearance Punch Tooling - Kidney Hole

Part #	Width	Length	Throat Depth	Punch Profile
400584P	1.64 inch	3.42 inch	3 inch	This punch provides a handle at top of bags typically found at clothing stores, etc. Kidney Hole Punch Shape 
400320P	26 mm	83.5 mm	3 inch	
400319P	32 mm	68 mm	3 inch	

Note: Images are not to scale.

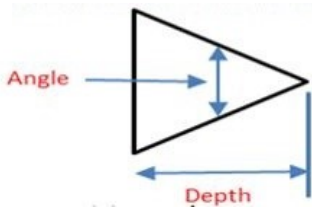
Zero Clearance Punch Tooling - Oval Handle

Part #	Width	Length	Throat Depth	Punch Profile
402851P	1/2 inch	2-5/8 inch	2 inch	This punch provides a handle at top of bags typically found at clothing stores, etc. Oval Handle Hole Punch Shape 
401164P	3/4 inch	1-3/4 inch	2 inch	
401230P	1 inch	3 inch	2 inch	
401816P	20 mm	67 mm	2 inch	
400318P	20 mm	75 mm	2 inch	
400316P	20 mm	80 mm	2 inch	
400317P	25 mm	72 mm	2 inch	

Note: Images are not to scale.

These C-frame punch units are for material ranging from 2 to 8 mils in thickness

Zero Clearance Punch Tooling - Angle Cut

Part #	Depth	Angle	Punch Profile
402361P	2 Inch	80°	This punch provides angled corners for finished pouches. Angle Cut Hole Punch Shape 
401760P	2 inch	90°	
401736P	2.5 inch	60°	
402579P	2.5 inch	90°	
402874P	2.75 inch	77°	
401384P	4.25 inch	50°	
400321P	40 x 50 mm	64°	
400322P	65 x 75 mm	60°	

Note: Images are not to scale.

Zero Clearance Punch Tooling

Part #	General Description
203065	Punch Vacuum Adapter enables the integration of vacuum to carry the punched material away from the production line.
206402	Slug Vacuum Adapter enables the integration of vacuum to carry the slug material away from the production line. Used for larger slugs from handle hole or angle cut punch shapes.
208910	Slug Vacuum Adapter enables the integration of vacuum to carry the slug material away from the production line. Used for smaller slug from most round hole punches.



208910—Slug Vacuum Adapter



206402—Slug Vacuum Adapter

Zero Clearance Punch Options

Part #	General Description
PUNCH3	Air Cylinder, 40 Bore x 15mm Stroke
PUNCH2	Air Cylinder, 50 Bore x 15mm Stroke
PUNCH1	Air Cylinder, 80 Bore x 15mm Stroke
500033	Mini-regulator W/gauge and 1/4 inch input
500273	Solenoid Valve, 24V
500480	Solenoid Valve, 110V, 4-way



As a significant wear part in any bag production line we know the importance of having long life in these parts. Our rolls offer high quality, with the longest possible lifespan.

We provide upper & lower draw rolls (Split or Solid) and seal rolls for many models of: Scheldahl, Ro-An (Polystar), FMC, Gamma or Gloucester bag machines.

We offer a very short lead time to reduce or even eliminate down time of your machine. It goes without saying that downtime causes delayed or even lost revenue.

We have a large selection of sizes in house, ready to ship for quick turnaround.

We offer Draw and Sealing Rolls in 30”, 41” and 56” sizes. With our in-house engineering capabilities, we can also custom make rolls to match any unique equipment requirements.

If you are not sure which roll you need, we can help you research the correct parts. Just send an email to: Sales@BagMachineParts.com and we'd be glad to assist you.

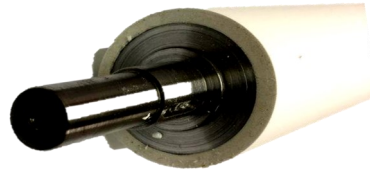
Note: a photo of the part is always helpful with our researching process.

Sealing Rolls

Part #	Length	Bearing Part #	General Description
PS-974	30"	S-20478	Seal Roller 8000-9000 series - Uses PS-4052 Gear
S-24248	30"	S-16187	Seal Roll - 308 (RA-3036)
S-24216	30"	S-4368	Seal Roll - 360
PS-0898	41"		Seal Roll - Split Polystar 9500
S-25872	41"	S-4368	Seal Roll - 108, 208, 308 (RA-3037)
PS-2105	41"		Split Lower Draw Roll
PS-2295	56"	S-20478	Split Seal Roll - 9500
S-25871	56"	S-4368	Seal Roll - 108, 208, 308 (RA-3038)



PS-974—30" Seal Roll



S-25872—41" Seal Roll

30" Draw Rollers

Part #	Bearing Part #	General Description
PS-0955		Lower Draw Roll (5500) Ro-An
PS-11022		30" Upper Draw Roll
PS-11837		30" Lower Draw Roll
PS-2071		Lower Draw Roll for Ro-An 5000-8000
PS-2515	PS-2508	30" Upper Draw Roll w/out Center Bearing 9000 Series
PS-2516	PS-2503	30" Lower Draw Roll w/out Center Bearing 9000 Series
PS-2517	PS-2508	30" Upper Draw Roll w/ Center Bearing 9000 Series
PS-2518	PS-2503	30" Lower Draw Roll w/ Center Bearing 9000 Series
PS-2551		Upper Solid Draw Roll 9500 Ro-An
PS-977		Upper Draw Roll (5000, 5500, 8000) Ro-An
S-27803	S-20083	Lower Solid Draw Roll 2" (RA-3030) - 308
S-27804	S-1928	Upper Solid Draw Roll 2" (RA-3010) - 308
S-43429	S-40714	Upper Draw Roll 2" - 360
S-43432	S-20083	Lower Draw Roll 2" - 360



**PS-2071—
Lower
Draw Roll**



**PS-2517—30"
Upper Draw
Roll**

41" Draw Rollers

Part #	Bearing Part #	General Description
PS-0892		Upper Draw Roll - Split Polystar 9500
PS-0895		Lower Draw Roll - Split Polystar 6000, 9500
PS-2619		Split Lower Draw Roll 9400 series W/Aux Draw Roll PS-3010
PS-2630		Split Upper Draw Roll 9400 series W/Aux Draw Roll PS-2630
PS-2841		Solid Upper Draw Roll 9420-9414 series
PS-2842		Solid Lower Draw Roll 9420-9414 series
PS-2846	PS-2508	Solid Upper Draw Roll 9450 series
PS-2847	PS-2503	Solid Lower Draw Roll 9450 series
S-12167	S-1928	Split Upper Draw Roll 1" - 108/208/308
S-12171	S-2049	Split Lower Draw Roll 1" - 108/208
S-12175	S-1928	Solid Upper Draw Roll 1" - 108/208/308
S-12176	S-2049	Solid Lower Draw Roll 1" - 108/208
S-12932	S-2049	Split Lower Draw Roll 2" (RA-3048) - 108/208
S-12933	S-1928	Split Upper Draw Roll 2" (RA-3042) - 108/208
S-12937	S-2049	Solid Lower Draw Roll 2" (RA-3016) - 108/208
S-19727	S-1928	Solid Upper Draw Roll 2" (RA-3002) - 108/208/308
S-20033	S-20083	Split Lower Draw Roll 1" - 308
S-20506	S-20083	Solid Lower Draw Roll 1" - 308
S-20507	S-4389	Solid Lower Draw Roll 2" (RA-3014) - 308
S-20518	S-20083	Split Lower Draw Roll 2" (RA-3046) - 308



S-12932
41" Split Lower Draw Roll

56" Draw Rollers

Part #	Bearing Part #	General Description
PS-2143		Split Upper Draw Roll
PS-2146		Split Lower Draw Roll
PS-2349		Lower Solid Draw Roll - 3500
PS-2350		Upper Solid Draw Roll - 3500
PS-2553	S-24078	Split Lower Draw Roll - 9500
PS-2559	PS-2508	Split Upper Draw Roll - 9500
PS-2835	PS-2508	Solid Upper Draw Roll - 9500
PS-2840	S-24078	Solid Lower Draw Roll - 9550
PS-2952	S-24078	Split Lower Draw Roll w/ extended Shaft - 9500
PS-4481	S-24078	Solid Lower Draw Roll w/ Drive 9550,9514,9520
PS-4801		Solid Lower Draw Roll 1/4" Grooves 9550,9514,9520,9614
PS-4802		Split Upper Draw Roll 1/4" Grooves 9614
S-12168	S-2049	Solid Lower Draw Roll 1" - 108/208
S-12172	S-2049	Split Lower Draw Roll 1" - 108/208
S-12173	S-1928	Split Upper Draw Roll 1" - 108/208/308
S-12189	S-1928	Solid Upper Draw Roll 1" - 108/208/308
S-12930	S-1928	Split Upper Draw Roll 2" - 108/208/308(RA-3044)
S-12931	S-2049	Split Lower Draw Roll 2" - 108/208(RA-3050)
S-19688	S-2049	Solid Lower Draw Roll 2" - 108/208 (RA-3024)
S-19689	S-1928	Solid Upper Draw Roll 2" - 108/208/308 (RA-3008)
S-20413	S-20083	Split Lower Draw Roll 1" - 308
S-20529	S-20083	Solid Lower Draw Roll 1" - 308
S-20530	S-4389	Solid Lower Draw Roll 2" - 308 (RA-3028)
S-20536	S-20083	Split Lower Draw Roll 2" - 308 (RA-3052)



S-20536

56" Split Lower Draw Roll for Model 308



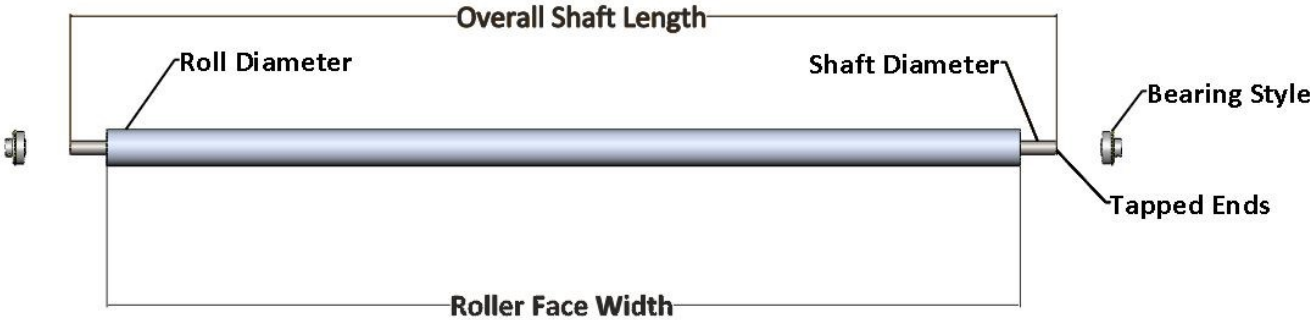
PS-2553

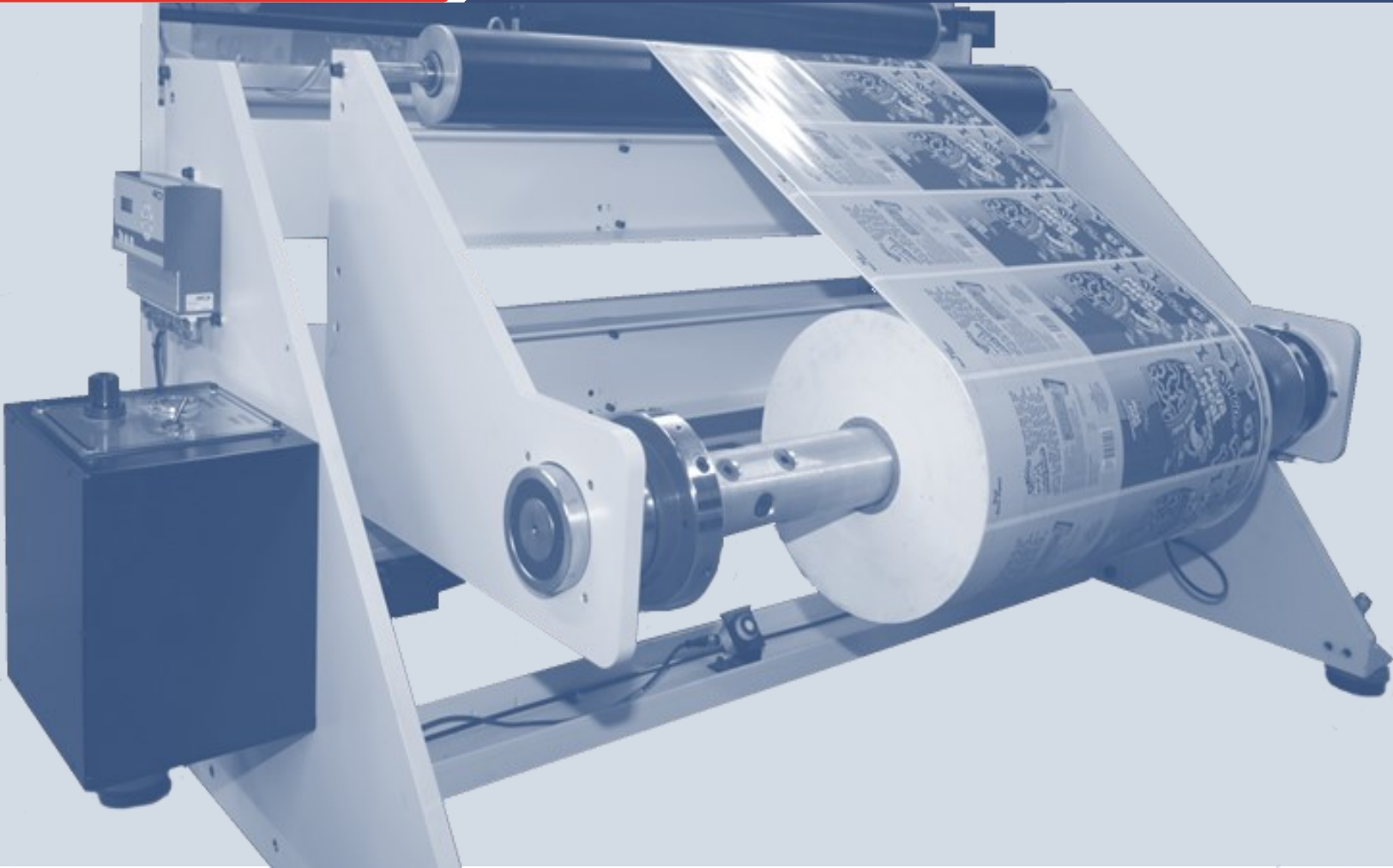
56" Split Lower Draw Roll - 9500

Build to Order Idler Roll Assembly

Clear Anodized Aluminum Roll Assembly				
Roll Diameter	Wall Thickness	Shaft Diameter	Tapped Threads	Bearing Part #
2 inch	1/8 inch	5/8	5/16-18	400137
2 inch	1/8 inch	3/4	3/8-16	400010

- Specify Roller Face Width
- Specify Shaft Diameter and Overall Shaft Length





At BagMachineParts.com we have a dedicated team of technical engineers and suppliers that provide world class parts for all unwind systems. This ensures a quick turnaround to all inquiries, with the highest quality available. This will ensure optimal performance in your production lines

We offer a very short lead time to reduce or even eliminate down time of your machine. It goes without saying that downtime causes delayed or even lost revenue.

Whatever your requirement (air shafts, brakes, core or safety chucks) we will be pleased to help keep your production running and improve your line's productivity.

We carry a large range of spare parts in order to provide our customers quick turnaround. If you are not sure which spare parts you need, we can help you identify the correct parts. Just send an email to: sales@BagMachineParts.com and we'd be glad to assist you.

Note: a photo of the part is always helpful with our researching process.

Core Chucks

Part #	Description	Machine Type
S-01376	Core Chuck: 3" Outside Diameter x 1" Bore	Scheldahl
S-03584	Core Chuck: 3" Outside Diameter x 1-1/2" Bore	Scheldahl
S-03584-1.25	Core Chuck: 3" Outside Diameter X 1-1/4" Bore	Scheldahl
S-03584-1.375	Core Chuck: 3" Outside Diameter X 1-3/8" Bore	Scheldahl
S-17858	Core Chuck: 6" Outside Diameter x 1 1/2" Bore	Scheldahl



S01376
Core Chuck:
3" Outside Diameter
1" Bore



S-03584
Core Chuck:
3" Outside Diameter
1-1/2" Bore



S-03584-1.25
Core Chuck: 3" Outside Diameter
1.25" Bore



S-17858
Core Chuck: 6" Outside Diameter
1 1/2" Bore

Safety Chucks

Part #	Description
401731	30mm Safety Chuck, U-SQ, W/O Shaft (Non-Drive)
300792	30mm Safety Chuck, U-SQ, W/3.273 Shaft, Ø1-3/8



401731
30mm Safety Chuck, U-SQ, W/O Shaft
(Non-Drive)



300792
30mm Safety Chuck, U-SQ,
W/3.273 Shaft, Ø1-3/8

Brakes

Part #	Description
Manual	
S-00450	Drag Brake Short 12" x 24"
403457	Drag Brake Long 12" x 72"
Pneumatic	
400437	Pneumatic, Brake, 100 in-lbs torque
402472	Pneumatic Brake, ultra-low COF pads, 1.125" Bore
400845	Pneumatic Brake, ultra-low COF pads, 1.375" Bore



S-00450
Drag Brake Short
12" x 24"



400437
Clutch Brake 100 in-lbs
torque



400845
Pneumatic Brake,
ultra-low COF pads

Air Shafts

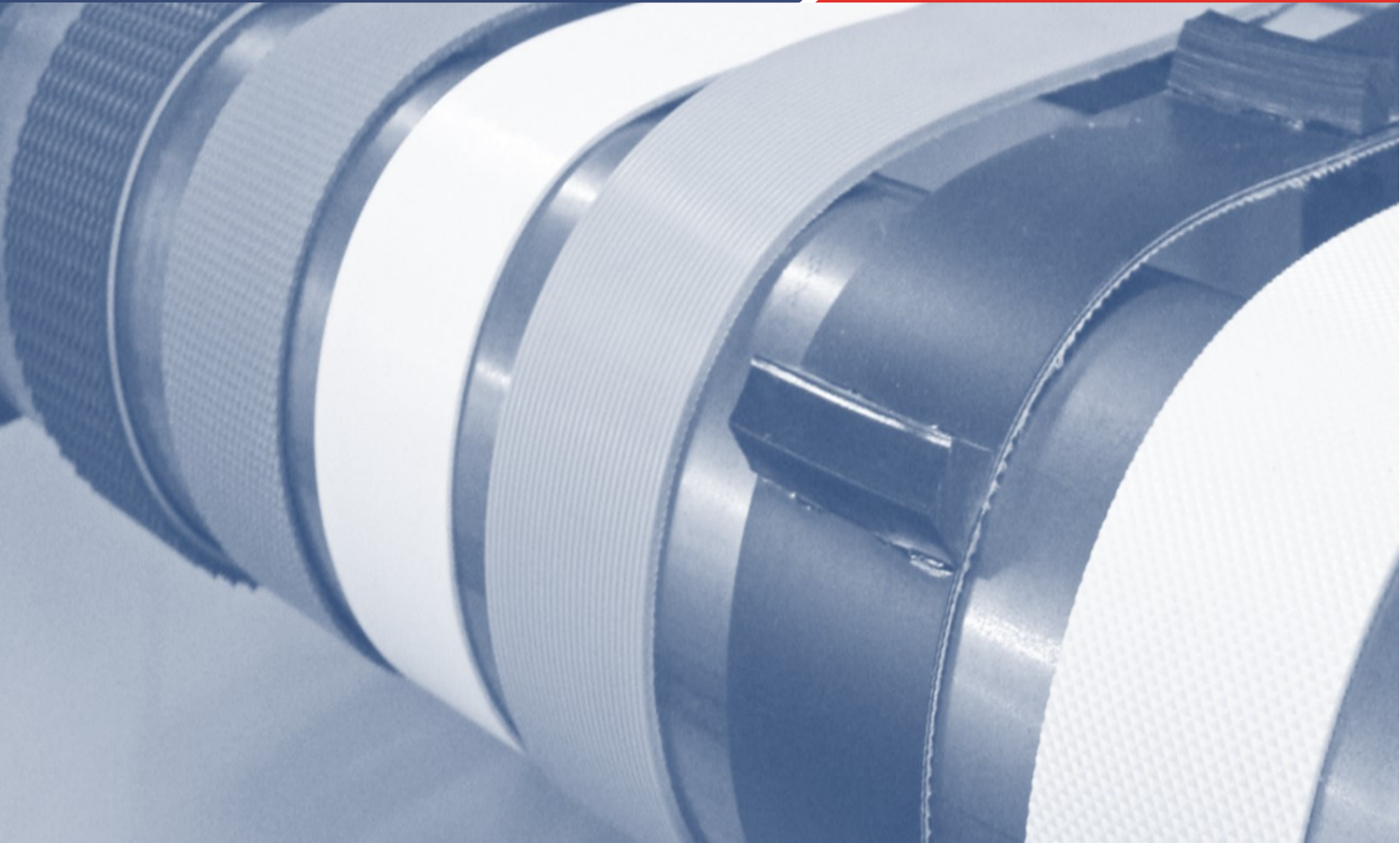
Part #	Description
402917	3" OD x 24" Face Air Shaft – 30mm, SQ Ends
402238	3" OD x 48" Face Air Shaft – 30mm, SQ Ends
402820	3" OD x 52" Face Air Shaft – 30mm, SQ Ends
401733	3" OD x 60" Face Air Shaft – 30mm, SQ Ends
500424	Nozzle, Air Shaft Inflation



402820
3" OD x 52" Face, Air Shaft,
30mm, SQ Ends



500424
Nozzle, Air Shaft
Inflation



The belting used in a particular machine is as varied as the applications being run.

Finding a supplier that has a wide selection of belts in various types/materials to a variety of lengths and widths, is critical to maintaining uptime on your production lines. At **BagMachineParts.com** we pride ourselves on having a large inventory and a wide variety of belts, for the diverse needs of the converting industry.

If you are not sure which belts you need, we can help you research the correct parts. Just send an email to: Sales@BagMachineParts.com and we'd be glad to assist you.

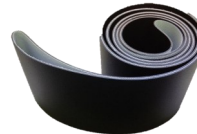
Note: a photo of the part is always helpful with our researching process.

Conveyor Belts—Anti Static

Part #	Description	Machine Type
BMP-79AS	Conveyor Belt 1" x 79" Anti-Static	
S-01389B-83	Conveyor Belt 1" x 83" Anti-Static	Scheldahl
S-01389B-85	Conveyor Belt 1" x 85" Anti-Static	Scheldahl
S-01389B-88	Conveyor Belt 1" x 88" Anti-Static	Scheldahl
S-20784B	Conveyor Belt 1" x 136" Anti-Static	Scheldahl
S-01391B	Conveyor Belt 1" x 144" Anti-Static	Scheldahl
PS-2710B	Conveyor Belt 1" x 151" Anti-Static	RO-AN
S-04283B	Conveyor Belt 4-7/8" x 88-1/8" Anti-Static	Scheldahl
S-24555B	Conveyor Belt 4-7/8" x 136" Anti-Static	Scheldahl
S-04366B-144	Conveyor Belt 4-7/8" x 144" Anti-Static	Scheldahl
S-04366B-148	Conveyor Belt 4-7/8" x 148" Anti-Static	Scheldahl
PS-2711B	Conveyor Belt 4-7/8" x 157" Anti-Static	RO-AN



S-20784B
Anti-Static Belting



S-04283B
Anti-Static Belting

Conveyor Belts—Cotton

Part #	Description	Part #	Description
C-01389-70	Conveyor Belt 1" x 70" Cotton	C-01389-150	Conveyor Belt 1" x 150" Cotton
C-01389-83	Conveyor Belt 1" x 83" Cotton	C-04366-70	Conveyor Belt 4-7/8" x 70" Cotton
C-01389-85	Conveyor Belt 1" x 85" Cotton	C-04283-88	Conveyor Belt 4-7/8" x 88-1/8" Cotton
C-01389-86.5	Conveyor Belt 1" x 86-1/2" Cotton	C-04283-92	Conveyor Belt 4-7/8" x 92-1/8" Cotton
C-01389-88	Conveyor Belt 1" x 88" Cotton	C-04283-97	Conveyor Belt 4-7/8" x 97-1/8" Cotton
C-01389-92	Conveyor Belt 1" x 92" Cotton	C-04283-100	Conveyor Belt 4-7/8" x 100-1/8" Cotton
C-01389-96	Conveyor Belt 1" x 96" Cotton	C-04366-140	Conveyor Belt 4-7/8" x 140" Cotton
C-01389-100	Conveyor Belt 1" x 100" Cotton	C-04366-144	Conveyor Belt 4-7/8" x 144" Cotton
C-01389-118	Conveyor Belt 1" x 118" Cotton	C-04366-146	Conveyor Belt 4-7/8" x 146" Cotton
C-01389-124	Conveyor Belt 1" x 124" Cotton	C-04366-148	Conveyor Belt 4-7/8" x 148" Cotton
C-01389-136	Conveyor Belt 1" x 136" Cotton	C-04366-150	Conveyor Belt 4-7/8" x 150" Cotton
C-01389-144	Conveyor Belt 1" x 144" Cotton	C-04366-157	Conveyor Belt 4-7/8" x 157" Cotton
C-01389-151	Conveyor Belt 1" x 151" Cotton		



C-01389-85
1"x85" Cotton Conveyor Belt



C-01389-151
1"x 151" Cotton Conveyor Belt

Conveyor Belts—Canvas

Part #	Description	Machine Type
S-01389-65	Conveyor Belt 1" x 65",Canvas	Scheldahl
S-24435	Conveyor Belt 1" x 66", Canvas	Scheldahl
S-01389-70	Conveyor Belt 1" x 70", Canvas	Scheldahl
S-01389-83	Conveyor Belt 1" x 83", Canvas	Scheldahl
S-01389-85	Conveyor Belt 1" x 85", Canvas	Scheldahl
S-01389-88-A	Conveyor Belt 1" x 88", Canvas	Scheldahl
PS-2632	Conveyor Belt 1" x 92", Canvas	Polystar/Ro-An
S-20784	Conveyor Belt 1" x 136", Canvas	Scheldahl
S-01391	Conveyor Belt 1" x 144", Canvas	Scheldahl
S-01389-148	Conveyor Belt 1" x 148", Canvas	Scheldahl
PS-2710	Conveyor Belt 1" x 151", Canvas	Ro-An
S-24436	Conveyor Belt 4-7/8" x 66", Canvas	Scheldahl
S-04283	Conveyor Belt 4-7/8" x 88-1/8", Canvas	Scheldahl
S-24555	Conveyor Belt 4-7/8" x 136", Canvas	Scheldahl
S-04366-140	Conveyor Belt 4-7/8" x 140", Canvas	Scheldahl
S-04366-144	Conveyor Belt 4-7/8" Xx144", Canvas	Scheldahl
S-04366-146	Conveyor Belt 4-7/8" x 146", Canvas	Scheldahl
S-04366-148	Conveyor Belt 4-7/8" x 148", Canvas	Scheldahl
PS-2711	Conveyor Belt 4-7/8" x 157", Canvas	Ro-An
S-04366-70	Conveyor Belt Roll 4-7/8" x 70 Feet, Canvas	Scheldahl
S-04366R-100	Conveyor Belt Roll 4-7/8" x 100 Feet, Canvas	Scheldahl
S-04366R-150	Conveyor Belt Roll 4-7/8" x 150 Feet, Canvas	Scheldahl
S-04366R-200	Conveyor Belt Roll 4-7/8" x 200 Feet, Canvas	Scheldahl
S-04366R-300	Conveyor Belt Roll 4-7/8" x 300 Feet, Canvas	Scheldahl



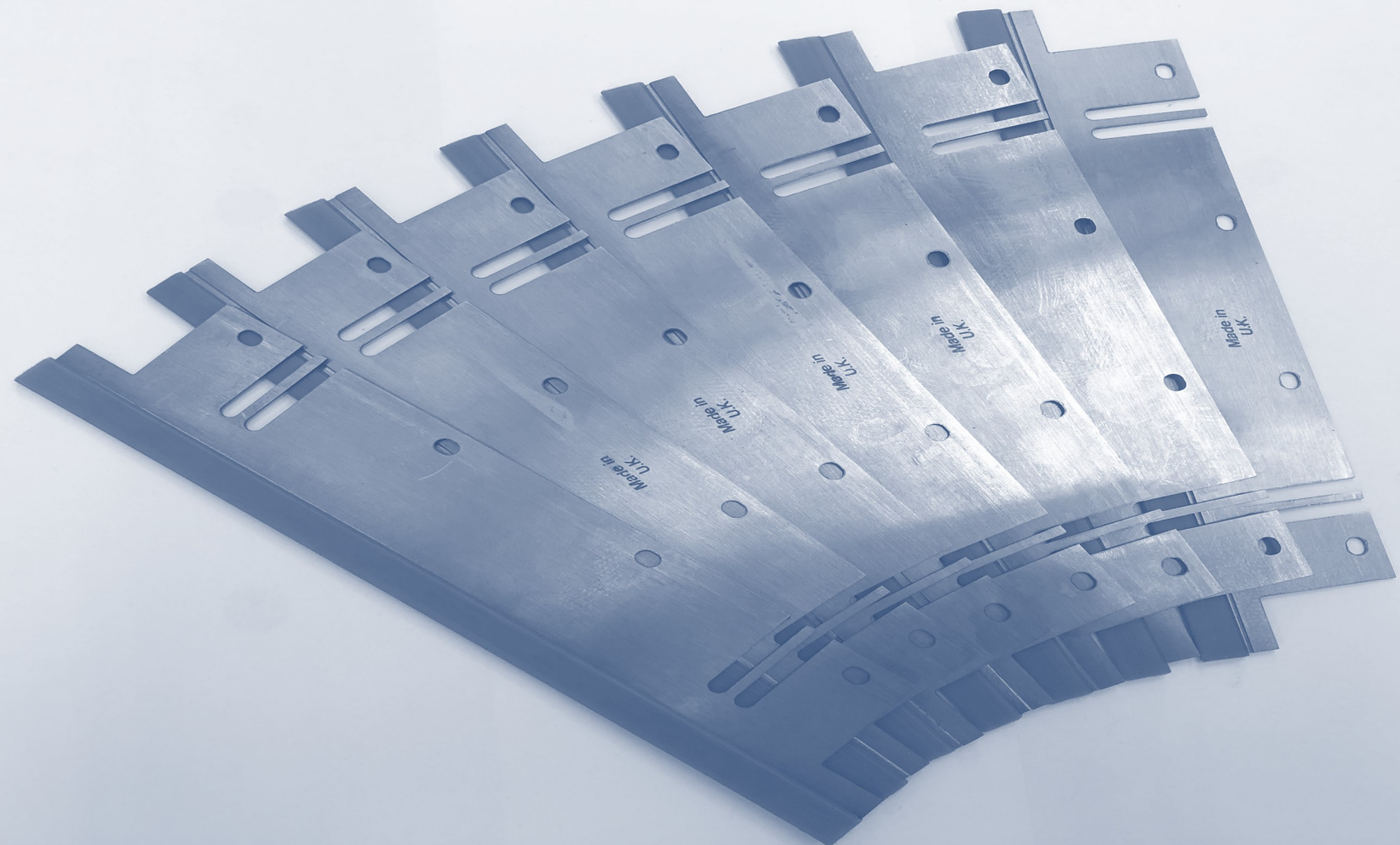
S-04366-70
4 7/8" x 70" Canvas Belting



PS-2711
4 7/8" x 147" Canvas Belting



S-01389-88-A
1 x 88" Canvas Belting



Whether it's cutting, serrating, perforating or slitting, any of these are critical steps in the flexible packaging/bag making process. The key to uptime and productivity is to ensure that you have the right part for your business operation.

We work directly with our suppliers, to ensure that all our blades, wheels and knives are manufactured to provide the longest life possible. We maintain a large inventory of blades, wheels and knives for virtually any application and machine type.

If you are not sure which blades, wheels or knives you need, we can help you research the correct parts. Just send an email to: Sales@BagMachineParts.com and we'd be glad to assist you.

Note: a photo of the part is always helpful with our researching process.

Flying Knives

Part #	Description	Machine Type
S-02070	Flying Knife Blade - 20 Pack	Scheldahl
S-05054	Flying Knife Belt 41", 108	Scheldahl
S-10815	Flying Knife Belt 41", 208/308	Scheldahl
S-10864	Flying Knife Belt 56", 208/308	Scheldahl



S-10815
Flying Knife Belt 41"
208/308



S-02070
Flying Knife Blade
- 20 Pack

Safety Knives

Part #	Description	Replacement Blade
HD100	Safety Knife, Small, 1/8" Throat, Plastic	S-02070
HD250	Safety Knife, Large, 1/4" Throat, Plastic	S-02070
403586	Safety Knife, Small, 1/8" Throat, Aluminum	SC100003
403587	Safety Knife, Large, 1/4" Throat, Aluminum	400133



HD250
Safety Knife, Large



403587
Safety Knife, Large



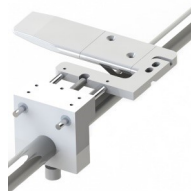
HD100
Safety Knife, Small

Slitters

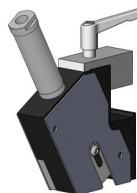
Part #	Description	Replacement Blade
211743	Blade Holder	400133
AM03024	Fold Edge Slitter	400133
AM03016	2 Side Safety Slitter, Square Mount	400133
BMP-AM03009	Slitter, 2 Sided Safety, Round Mount	400133
SM01672	Lip Slitter	400133



211743
Blade Holder



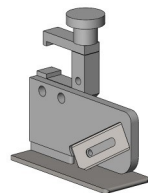
AM03024
Fold Edge Slitter



AM03016
2 Side Safety Slitter, Square
Mount



BMP-AM03009
2 Sided Safety Slitter,
Round Mount



SM01672
Lip Slitter

Blades

Part #	Description	Machine Type
PSW-1078	Blade, Enlarged Hole	
S-02070A	Injector Blade, 1000/Box	Scheldahl
S-02070CC	Injector Blade, Carbon Coated, 100/Pack	Scheldahl
S-02070L	Injector Blade, Stainless Steel	Scheldahl
S-02070T	Injector Blade ,100/Pack	Scheldahl
S-02070TIN	Injector Blade, Tin Coated, 200/Pack	Scheldahl
S-19507	Slitter Blade	Scheldahl
SC100003	Blade, Replacement	
400133	Blade, Replacement	



SC100003
Replacement Blade



400133
Replacement Blade



S-19507
Slitter Blade



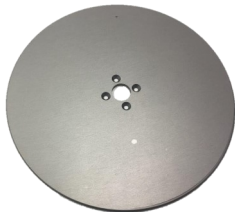
PSW-1078
Blade - Enlarged Hole



S-2070A
Injector Blade 1000/box

Gusset Parts

Part #	Description	Machine Type
S-22441	Gusset Wheel - 7.5"	Scheldhal
S-22443	Gusseter Adjusting Screw	Scheldhal
S-22444	Gusset Wheel Support	Scheldhal
S-22445	Bearing Wheel Gusseter (5/16" ID, 7.8" OD)	Scheldhal



S-22441
Gusset Wheel - 7.5"



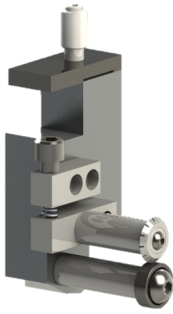
S-22444
Gusset Wheel Support



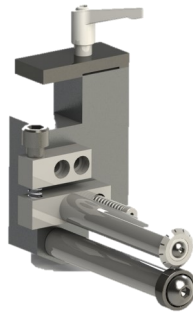
S-22445
Bearing Wheel Gusseter

Serrators & Wheels

Part #	Description
AM36002	Serrator - 2-1/8" Throat
AM36003	Serrator - 4-1/8" Throat
401688	Serrator Wheel, 7/8" OD, 12T, .199 cut, .030 land
401689	Serrator Wheel, 7/8" OD, 24T, .199 cut, .030 land
S-29768-12	Serrator Wheel, 15/16" OD, 12T, .231 cut, .015 land
S-29768-16	Serrator Wheel, 15/16" OD, 16T, .169 cut, .015 land
S-29768-20	Serrator Wheel, 15/16" OD, 20T, .133 cut, .015 land
S-29768-24	Serrator Wheel, 15/16" OD, 24T, .128 cut, .015 land
S-40190A	Spring Loaded Serrator Assembly



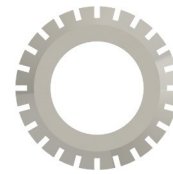
AM36002
Serrator-2-1/8 Throat



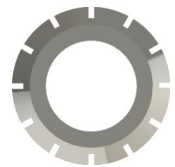
AM36003
Serrator-4-1/8 Throat



S-29768-12
Serrator Wheel
7/8: OD, 12T



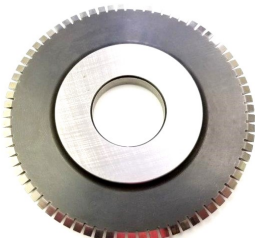
4011689
Serrator
Blade, 24T



4011688
Serrator
Blade, 12T

Serrated Wheels

Part #	Description
401663	Score Slitter, Set Screw Clamp
ATW-Slit	Air Razor Slit Wheel
ATW-75	Air Serrating Wheel, 75 Tooth, .097 cut, .030 land
ATW-100	Air Serrating Wheel, 100 Tooth, .065 cut, .030 land



ATW-75
75 Tooth Air Serrator



ATW-Slit
Air Razor Slit Wheel



401663
Score Slitter, Set Screw
Clamp

Perforating Blades

Part #	Description	Machine Type
A400-049-HT	GEC rubber tipped stripper set W/Holes, 700°	Gloucester
A400-049-K	Stripper Plate - Knurled (No Rubber)	Gloucester
A400-049-S	Springs for GEC Rubber Tipped Aluminum Stripper Set W/Holes	Gloucester
A400-049-SC	GEC Perforating Blade Screw for Model 418	Gloucester
B-227	27 Tooth GEC Blade - Unslotted	Gloucester
B-227CC	27 Tooth GEC Blade - Gold Coat, Unslotted	Gloucester
B-227CC-Slot	27 Tooth GEC Blade - Gold Coat, Slotted	Gloucester
B-227-Slot	27 Tooth GEC Blade - Slotted	Gloucester
B-240	40 Tooth GEC Blade - Unslotted	Gloucester
B-240CC	40 Tooth GEC Blade - Gold Coated, Unslotted	Gloucester
B-240CC-1.70	40 Tooth GEC Blade - Coated, Unslotted	Gloucester
B-240-Slot	40 Tooth GEC Blade - Slotted	Gloucester
B-240CC-.112	40 Tooth Blade - Coated, .112 Slotted	Gloucester
B-240CC-Slot	40 Tooth GEC Blades - Titanium	Gloucester
B-240CC-Slot-1.75	40 Tooth GEC Blade- Gold Coated, Slotted	Gloucester
B-250CC	50 Tooth Blade - Coated	Gloucester
B-250-Slot	50 Tooth GEC Blade - Slotted	Gloucester
B-250CC-Slot	50 Tooth Slotted Blades - Gold Coated	Gloucester



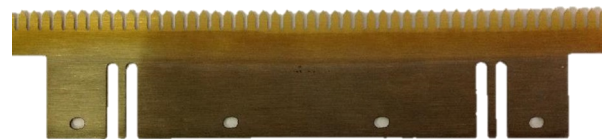
A400-049-K
Stripper Plate - Knurled (No Rubber)



B-227CC-Slot
27 Tooth GEC blade - Gold Coated-Slotted



A400-049-HT
GEC Rubber tipped set with holes - for temps up to 700 degrees



B-250CC-Slot
50 Tooth GEC blade-Gold Coated-Slotted



A400-049-S
Spring for GEC Rubber Tipped Aluminum Stripper Set W/Holes



B-240CC-Slot-1.75
40 Tooth GEC blade-Gold Coated-Slotted



Our large selection of Teflon tape comes with either **Silicone** or **Acrylic** adhesive.

- ✓ **Acrylic adhesive:** -40°F – +350°F (-40°C – +177°C)
- ✓ **Silicone adhesive:** -100°F – +500°F (-73°C – +260°C)

Our **Standard Grade** is for most adhesive applications and has a smooth surface with remarkable non-stick properties.

Premium Grade - The smoothest surface for the most demanding applications.

Benefits include:

- ✓ Optimal release
- ✓ Low friction
- ✓ Electrical insulation
- ✓ Dimensional stability
- ✓ Excellent temperature resistance

We also offer tear resistant Teflon fabric. This product features an extra heavy coating of PTFE, BMP Premium-Grade Fabric delivers a super-smooth surface, perfect for advanced applications, including:

- ✓ Laminate separator sheets
- ✓ Specialized heat-sealing
- ✓ Demanding, non-stick applications

We have a large selection of Teflon tapes and fabrics in-house and ready to ship for quick turnaround.

Teflon Tape Products

Part #	Description	Part #	Description
<i>TT3-10</i>	3 Mil Teflon Tape 1" x 36 yards	<i>TT5-050</i>	5 Mil Teflon Tape .5" x 36 yards
<i>TT3-10B</i>	3 Mil Teflon Tape 1" x 36 yards - Acrylic	<i>TT5-075</i>	5 Mil Teflon Tape .75" x 36 yards
<i>TT3-10-NL</i>	3 Mil Teflon Tape 1" x 36 yards - No Liner	<i>TT5-10-18</i>	5 Mil Teflon Tape 1" x 18 yards
<i>TT3-1050</i>	3 Mil Teflon Tape 1.5" x 36 yards	<i>TT5-10</i>	5 Mil Teflon Tape 1" x 36 yards
<i>TT3-1050-NL</i>	3 Mil Teflon Tape 1.5" x 36 yards - No Liner	<i>TT5-10-NL</i>	5 Mil Teflon Tape 1" x 36 yards - No Liner
<i>TT3-1075</i>	3 Mil Teflon Tape 1.75" x 36 yards	<i>TT5-1050</i>	5 Mil Teflon Tape 1.5" x 36 yards
<i>TT3-20</i>	3 Mil Teflon Tape 2" x 36 yards	<i>TT5-20</i>	5 Mil Teflon Tape 2" x 36 yards
<i>TT3-20-NL</i>	3 Mil Teflon Tape 2" x 36 yards - No Liner	<i>TT5-2050</i>	5 Mil Teflon Tape 2.5" x 36 yards
<i>TT3-2050</i>	3 Mil Teflon Tape 2.5" x 36 yards	<i>TT5-30-18</i>	5 Mil Teflon Tape 3" x 18 yards
<i>TT3-30</i>	3 Mil Teflon Tape 3" x 36 yards	<i>TT5-30</i>	5 Mil Teflon Tape 3" x 36 yards
<i>TT3-30-NL</i>	3 Mil Teflon Tape 3" x 36 yards - No Liner	<i>TT5-30P</i>	5 Mil Teflon Tape 3" x 36 yards - Premium
<i>TT3-3050</i>	3 Mil Teflon Tape 3.5" x 36 yards	<i>TT5-3050</i>	5 Mil Teflon Tape 3.5" x 36 yards
<i>TT3-40</i>	3 Mil Teflon Tape 4" x 36 yards	<i>TT5-40</i>	5 Mil Teflon Tape 4" x 36 yards
<i>TT3-4050</i>	3 Mil Teflon Tape 4.5" x 36 yards	<i>TT5-40P</i>	5 Mil Teflon Tape 4" x 36 yards - Premium
<i>TT3-50</i>	3 Mil Teflon Tape 5" x 36 yards	<i>TT5-4050</i>	5 Mil Teflon Tape 4.5" x 36 yards
<i>TT3-5050</i>	3 Mil Teflon Tape 5.5" x 36 yards	<i>TT5-50</i>	5 Mil Teflon Tape 5" x 36 yards
<i>TT3-60</i>	3 Mil Teflon Tape 6" x 36 yards	<i>TT5-5050</i>	5 Mil Teflon Tape 5.5" x 36 yards
<i>TT3-6050</i>	3 Mil Teflon Tape 6.5" x 36 yards	<i>TT5-60</i>	5 Mil Teflon Tape 6" x 36 yards
<i>TT3-70</i>	3 Mil Teflon Tape 7" x 36 yards	<i>TT5-6050</i>	5 Mil Teflon Tape 6.5" x 36 yards
<i>TT3-7050-18</i>	3 Mil Teflon Tape 7.5" x 18 yards	<i>TT5-70</i>	5 Mil Teflon Tape 7" x 36 yards
<i>TT3-7050</i>	3 Mil Teflon Tape 7.5" x 36 yards	<i>TT5-7050</i>	5 Mil Teflon Tape 7.5" x 36 yards
<i>TT3-80</i>	3 Mil Teflon Tape 8" x 36 yards	<i>TT5-80</i>	5 Mil Teflon Tape 8" x 36 yards
<i>TT3-8025</i>	3 Mil Teflon Tape 8.25" x 36 yards	<i>TT5-80P</i>	5 Mil Teflon Tape 8" x 36 yards - Premium
<i>TT3-8050</i>	3 Mil Teflon Tape 8.5" x 36 yards	<i>TT5-8025</i>	5 Mil Teflon Tape 8.25" x 36 yards
<i>TT3-90</i>	3 Mil Teflon Tape 9" x 36 yards	<i>TT5-8050</i>	5 Mil Teflon Tape 8.5" x 36 yards
<i>TT3-9050</i>	3 Mil Teflon Tape 9.5" x 36 yards	<i>TT5-90</i>	5 Mil Teflon Tape 9" x 36 yards
<i>TT3-100</i>	3 Mil Teflon Tape 10" x 36 yards	<i>TT5-9050</i>	5 Mil Teflon Tape 9.5" x 36 yards
<i>TT3-120</i>	3 Mil Teflon Tape 12" x 36 yards	<i>TT5-100</i>	5 Mil Teflon Tape 10" x 36 yards
<i>TT3-220</i>	3 Mil Teflon Tape 22" x 36 yards	<i>TT5-120-18</i>	5 Mil Teflon Tape 12" x 18 Yards
<i>TT3-30050-18</i>	3 Mil Teflon Tape 30.5" x 18 yards	<i>TT5-120</i>	5 Mil Teflon Tape 12" x 36 yards
<i>TT3-37050</i>	3 Mil Teflon Tape 37.5" x 36 yards	<i>TT5-37050</i>	5 Mil Teflon Tape 37.5" x 36 yards



TT3-7050
3 Mil Teflon Tape 7.5" x 36 yards



TT3-10
3 Mil Teflon Tape 1" x 36 yards

Teflon Tape Products

Part #	Description	Part #	Description
<i>TT6-050</i>	6 Mil Teflon Tape .5" x 36 yards	<i>TT6-6050</i>	6 Mil Teflon Tape 6.5" x 36 yards
<i>TT6-050-HT</i>	6 Mil Teflon Tape .5" x 36 yards W/HT Adhesive	<i>TT6-70</i>	6 Mil Teflon Tape 7" x 36 yards
<i>TT6-050P</i>	6 Mil Teflon Tape .5" x 36 yards - Premium	<i>TT6-7050</i>	6 Mil Teflon Tape 7.5" x 36 yards
<i>TT6-075-NL</i>	6 Mil Teflon Tape .75" x 36 yards - No Liner	<i>TT6-80</i>	6 Mil Teflon Tape 8" x 36 yards
<i>TT6-10</i>	6 Mil Teflon Tape 1" x 36 yards	<i>TT6-80P</i>	6 Mil Teflon Tape 8" x 36 yards -Premium
<i>TT6-1050</i>	6 Mil Teflon Tape 1.5" x 36 yards	<i>TT6-8025</i>	6 Mil Teflon Tape 8.25" x 36 yards
<i>TT6-20</i>	6 Mil Teflon Tape 2" x 36 yards	<i>TT6-8050</i>	6 Mil Teflon Tape 8.5" x 36 yards
<i>TT6-20-NL</i>	6 Mil Teflon Tape 2" x 36 yards - No Liner	<i>TT6-90</i>	6 Mil Teflon Tape 9" x 36 yards
<i>TT6-2050</i>	6 Mil Teflon Tape 2.5" x 36 yards	<i>TT6-9050</i>	6 Mil Teflon Tape 9.5" x 36 yards
<i>TT6-30</i>	6 Mil Teflon Tape 3" x 36 yards	<i>TT6-100</i>	6 Mil Teflon Tape 10" x 36 yards
<i>TT6-30-NL</i>	6 Mil Teflon Tape 3" x 36 yards - No Liner	<i>TT6-120</i>	6 Mil Teflon Tape 12" x 36 yards
<i>TTZ6-3050</i>	6 Mil Teflon Zone Tape 3.5" x 36 yards	<i>TT6-18</i>	6 Mil Teflon Tape 37.5" x 18 yards
<i>TT6-3050</i>	6 Mil Teflon Tape 3.5" x 36 yards	<i>TT6</i>	6 Mil Teflon Tape 37.5" x 36 yards
<i>TT6-40</i>	6 Mil Teflon Tape 4" x 36 yards	<i>TT6-400-18</i>	6 Mil Teflon Tape 40" x 18 yards
<i>TT6-4050</i>	6 Mil Teflon Tape 4.5" x 36 yards	<i>TT8-2050</i>	8 Mil Teflon Tape 2.5" x 36 yards
<i>TT6-50</i>	6 Mil Teflon Tape 5" x 36 yards	<i>TT10-10</i>	10 Mil Teflon Tape 1" x 36 yards
<i>TT6-50-NL</i>	6 Mil Teflon Tape 5" x 36 yards - No Liner	<i>TT10P-10</i>	10 Mil Teflon Tape 1" x 36 yards -Premium
<i>TT6-5050</i>	6 Mil Teflon Tape 5.5" x 36 yards	<i>TT10-7050</i>	10 Mil Teflon Tape 7.5" x 36 yards
<i>TT6-60</i>	6 Mil Teflon Tape 6" x 36 yards	<i>TT10-80</i>	10 Mil Teflon Tape 8" x 36 yards
<i>TT6-60125</i>	6 Mil Teflon Tape 6.125" x 36 yards		



TT10-80
10 Mil Teflon Tape 8" x 36 yards



TT6-050
6 Mil Teflon Tape 5" x 36 yards

Teflon Fabric

Part #	Description	Part #	Description
TF3-050	3 Mil Teflon Fabric .5" x 36 yards	TF5-360	5 Mil Teflon Fabric 36" x 36 yards
TF3-10-6	3 Mil Teflon Fabric 1" x 6 yards	TF5-37050-18	5 Mil Teflon Fabric 37.5" x 18 yards
TF3-20	3 Mil Teflon Fabric 2" x 36 yards	TF5-37050	5 Mil Teflon Fabric 37.5" x 36 yards
TF3-40P	3 Mil Teflon Fabric 4" x 36 yards - Premium	TF5-37050-TR	5 Mil Teflon Fabric 37.5 x 36 yards-Tear
TF3-5025	3 Mil Teflon Fabric 5.25" x 36 yards	TF5-390	5 Mil Teflon Fabric 39" x 36 yards
TF3-5050-18	3 Mil Teflon Fabric 5.5" x 18 yards	TF5-42050	5 Mil Teflon Fabric 42.5" x 36 yards
TF3-100	3 Mil Teflon Fabric 10" x 36 yards	TF5-440-18	5 Mil Teflon Fabric 44" x 18 yards
TF3-120	3 Mil Teflon Fabric 12" x 36 yards	TF5-440	5 Mil Teflon Fabric 44" x 36 yards
TF3-13050	3 Mil Teflon Fabric 13.5" x 36 yards	TF5-540-18	5 Mil Teflon Fabric 54"x 18 yards
TF3-150	3 Mil Teflon Fabric 15" x 36 yards	TF5-540	5 Mil Teflon Fabric 54" x 36 yards
TF3-160	3 Mil Teflon Fabric 16" x 36 yards	TF5-600	5 Mil Teflon Fabric 60" x 36 yards
TF3-16050	3 Mil Teflon Fabric 16.5" x 36 yards	TF6-70	6 Mil Teflon Fabric 7" x 36 yards
TF3-200	3 Mil Teflon Fabric 20" x 36 yards	TF6-700625	6 Mil Teflon Fabric 7.063" x 36 yards
TF3-220	3 Mil Teflon Fabric 22" x 36 yards	TF6-90	6 Mil Teflon Fabric 9" x 36 yards
TF3-240	3 Mil Teflon Fabric 24" x 36 yards	TF6-160	6 Mil Teflon Fabric 16" x 36 yards
TF3-250	3 Mil Teflon Fabric 25" x 36 yards	TF6-200	6 Mil Teflon Fabric 20" x 36 yards
TF3-260	3 Mil Teflon Fabric 26" x 36 yards	TF6-240-18	6 Mil Teflon Fabric 24" x 18 yards
TF3-280	3 Mil Teflon Fabric 28" x 36 yards	TF6-240	6 Mil Teflon Fabric 24" x 36 yards
TF3-30050-18	3 Mil Teflon Fabric 30.5" x 18 yards	TF6-300-18	6 Mil Teflon Fabric 30' x 18 yards
TF3-360	3 Mil Teflon Fabric 36" x 36 yards	TF6-37050-18	6 Mil Teflon Fabric 37.5" x 18 yards
TF3-37050	3 Mil Teflon Fabric 37.5" x 36 yards	TF6-37050	6 Mil Teflon Fabric 37.5" x 36 yards
TF3-400	3 Mil Teflon Fabric 40" x 36 yards	TF6-400-18	6 Mil Teflon Fabric 40" x 18 yards
TF3-440	3 Mil Teflon Fabric 44" x 36 yards	TF8-380-50	8 Mil Teflon Fabric 38" x 50 yards
TF5-80P	5 Mil Teflon Fabric 8" x 36 yards - Premium	TF10-1050	10 Mil Teflon Fabric 1.5" x 36 yards
TF5-120	5 Mil Teflon Fabric 12" x 36 yards	TF10-200-18	10 Mil Teflon Fabric 20" x 18 yards
TF5-200	5 Mil Teflon Fabric 20" x 36 yards	TF10-360	10 Mil Teflon Fabric 36" x 36 yards
TF5-250-18	5 Mil Teflon Fabric 25" x 18 yards	TF10-400-50	10 Mil Teflon Fabric 40" x 50 yards
TF5-270	5 Mil Teflon Fabric 27" x 36 yards	TF10-220	10 Mil Teflon Fabric 22" x 36 yards
TF5-280	5 Mil Teflon Fabric 28" x 36 yards	TF10-16x20	10 Mil Teflon Fabric Sheets 16" x 20"
TF5-300	5 Mil Teflon Fabric 30" x 36 yards		



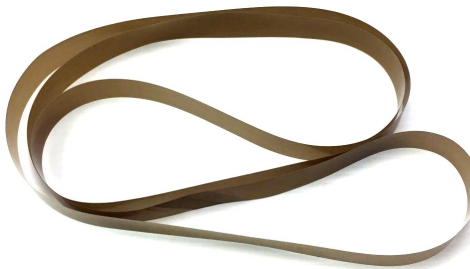
TF3-20
3 Mil Teflon Fabric 2" x 36 yards



TF3-100
3 Mil Teflon Fabric 10" x 36 yards

Teflon Belts

Part #	Description	Part #	Description
TB3-0.5-40-2	3 Mil Teflon Belt .5" x 40"-2 Ply	TB6-0.625-29.5-2	6 Mil Teflon Belt .625" x 29.5"-2 Ply
TB3-1-40-2	3 Mil Teflon Belt 1" x 40"-2 Ply	TB6-1-55-2	6 Mil Teflon Belt 1" x 55"-2 Ply
TB3-1-41-1	3 Mil Teflon Belt 1" x 41"-1 Ply	TB6-1-73.5-2	6 Mil Teflon Belt 1" x 73.5"-2 Ply
TB3-1-63-2	3 Mil Teflon Belt 1" x 63"-2 Ply	TB6-1-74-1	6 mil Teflon Belt 1" x 74"-1 Ply
TB3-1-74.125-1	3 Mil Teflon Belt 1" x 74.125"-1 Ply	TB6-1-74-2	6 Mil Teflon Belt 1" x 74"-2 Ply
TB3-1-74.125-2	3 Mil Teflon Belt 1" x 74.125"-2 Ply	TB6-1-74.125-1	6 Mil Teflon Belt 1" x 74.125"-1 Ply
TB3-1-86-2	3 Mil Teflon Belt 1" x 86"-2 Ply	TB6-1-90-2	6 Mil Teflon Belt 1" x 90"-2 Ply
TB3-1-90-2	3 Mil Teflon Belt 1" x 90"-2 Ply	TB6-1-92-2	6 Mil Teflon Belt 1" x 92"-2 Ply
TB3-1-92-1	3 Mil Teflon Belt 1" x 92"-1 Ply	TB6-1-99.5-2	6 Mil Teflon Belt 1" x 99.5"-2 Ply
TB3-1-92-2	3 Mil Teflon Belt 1" x 92"-2 Ply	TB6-1-102-2	6 Mil Teflon Belt 1" x 102"-2 Ply
TB3-1.25-46-1	3 Mil Teflon Belt 1.25" x 46"-1 Ply	TB6-1.125-90-1	6 Mil Teflon Belt 1.125" x 90"-1 Ply
TB3-1.25-46-2	3 Mil Teflon Belt 1.25" x 46"-2 Ply	TB6-1.125-90-2	6 Mil Teflon Belt 1.125" x 90"-2 Ply
TB3-1.25-61-2	3 Mil Teflon Belt 1.25" x 61"-2 Ply	TB6-1.25-61-1	6 Mil Teflon Belt 1.25" x 61"-1 Ply
TB3-1.5-41-1	3 Mil Teflon Belt 1.5" x 41"-1 Ply	TB6-1.25-61-2	6 Mil Teflon Belt 1.25" x 61"-2 Ply
TB3-1.5-46-1	3 Mil Teflon Belt 1.5" x 46"-1 Ply	TB8-6.5-146.15-1	8 Mil Teflon Belt 6.5" x 146.15"-1 x 45° overlap splice
TB5-2.5-90-1	5 Mil Teflon Belt 2.5" x 90"-1 Ply	TB8-6.5-146.15-2	8 Mil Teflon Belt 6.5" x 146.15"-2 x 45° overlap splice



TB3-1-63-2
3 Mil Teflon Belt, 1"x63", 2 Ply



TB6-1-90-2
6 Mil Teflon Belt, 1"x90", 2 Ply

Stacking Wheel Parts

Part #	Description	Size
BMP-Spacer	Spacer for stacking wheels	1-1/2" OD, 1 1/4" ID
S-05112	Stacking Wheel	1 1/4" Inside Diameter
S-05113	Stacking Wheel	1" Inside Diameter



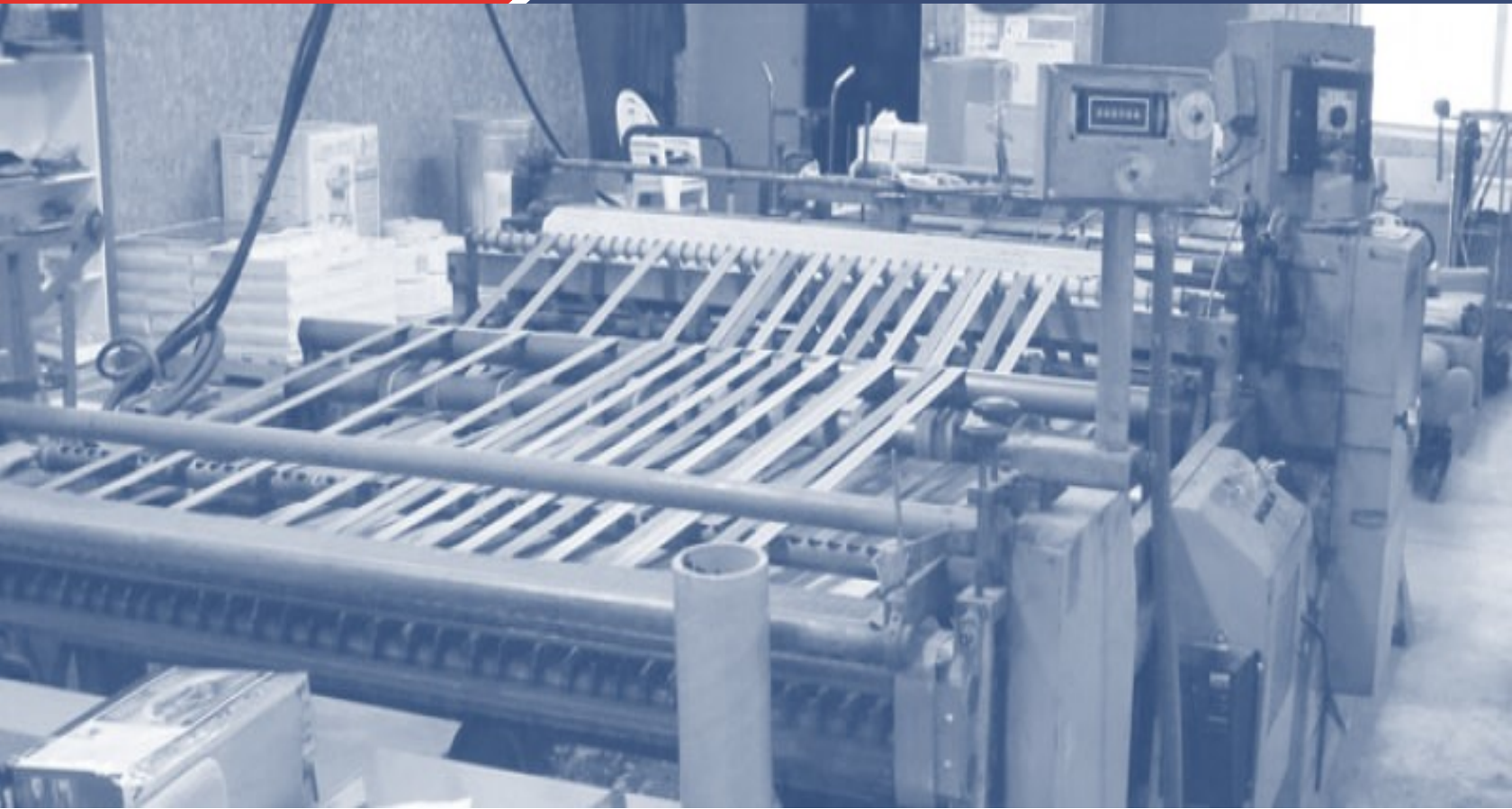
S-05112
Stacking Wheel



S-05113
Stacking Wheel



BMP-Spacer
Spacer of stacking wheels



Need some assistance just send an email to: Sales@BagMachineParts.com and we'd be glad to assist you. We have a large selection of sizes in house, ready to ship for quick turnaround.

Water Strippers and Tooling

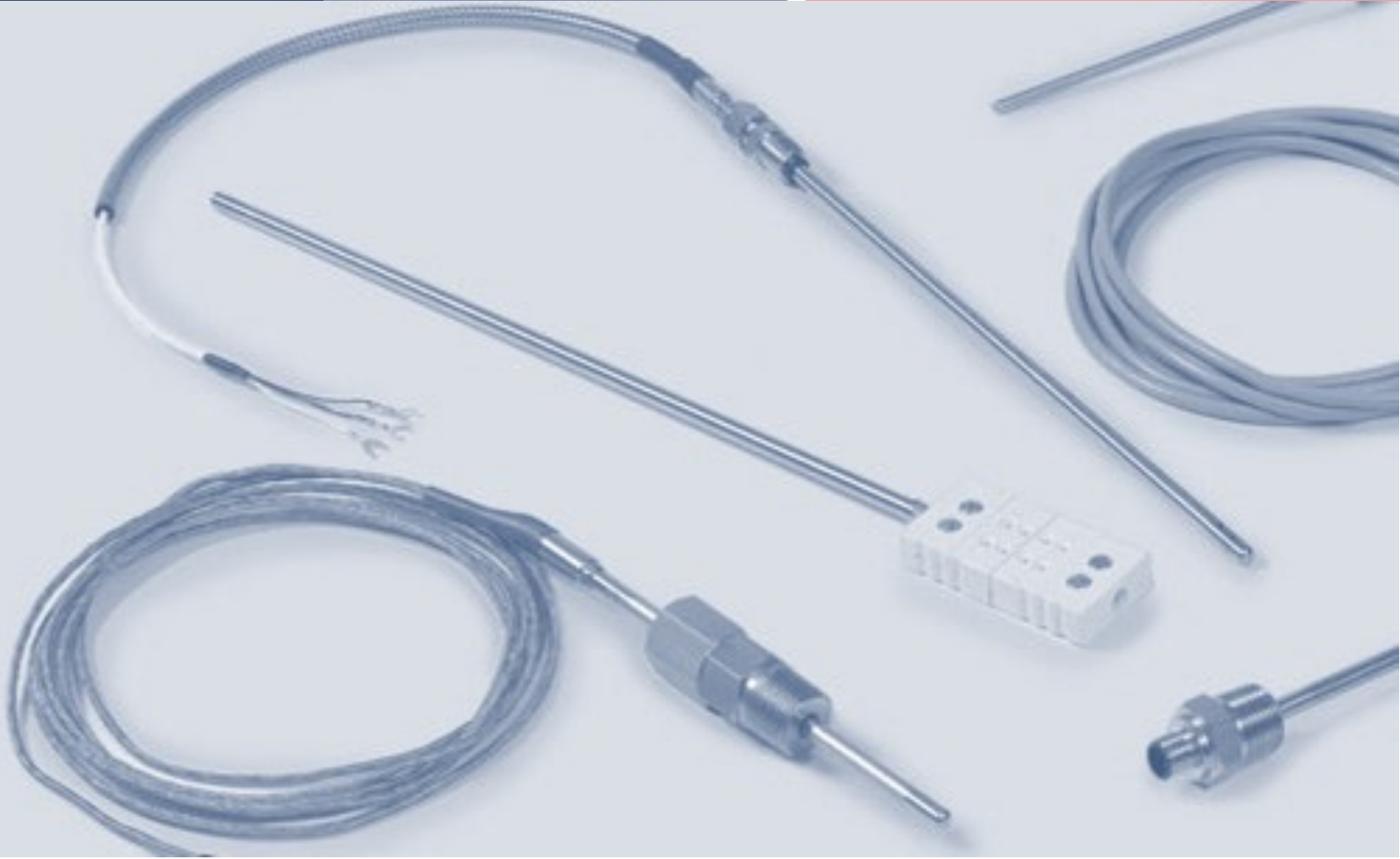
Part #	Description	Machine Type
S-24774	30" Water Stripper	Scheldahl
S-00891	41" Water Stripper	Scheldahl
S-04236-P	56" Water Stripper	Scheldahl
S-04759	Stripper Block	Scheldahl
S-42578-M	Stripper Block 360 IB	Scheldahl
S-42579-M	Stripper Block 360 OB (use either or S-42578)	Scheldahl



S-24774
Water Stripper 30"



S-04759
Stripper Block



Fortunately, Heaters and Thermocouples are parts that don't fail very often. However, when they do fail finding a replacement part quickly is critical. Downtime due to a failed part is the enemy of all production lines

With our broad inventory of parts and a community of dedicated suppliers, we can quickly turnaround all orders.

If you're unsure which Thermocouple or Heater you need, we can help you research the correct parts. Just send an email to: Sales@BagMachineParts.com and we'd be glad to assist you.

Note: a photo of the part is always helpful with our researching process.

Heaters

Part #	Description	Machine Type
PSW-1365	41" Cartridge Heater for Wicketer	RO-AN
PSW-1681	56" Cartridge Heater Element	RO-AN
S-17624	41" Heating Element, 240V, 4000W	Scheldahl
S-42053	30" Heating Element, 240V, 3500W	Scheldahl
S-43836	56" Heating Element, 240V, 5250W	Scheldahl
601038	72" Heating Element, 240V, 7000W	MMS



S-42053
30" Heat Element
(3500 Watts)

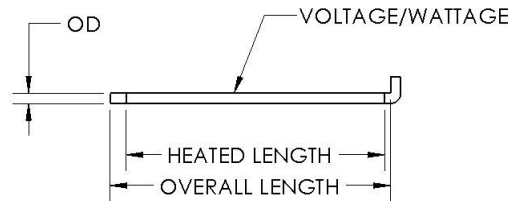
Custom Heaters

<i>Custom Cartridge</i>	Length, Voltage, Wattage, OD - Lead Length
-------------------------	--

CUSTOM CARTRIDGE HEATER

Specify:

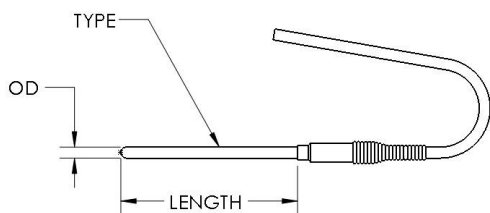
- Overall Length
- Heated Length
- Outside Diameter (OD)
- Voltage
- Wattage
- Lead Length
- Any additional requirements



Custom Cartridge Heater

Thermocouples

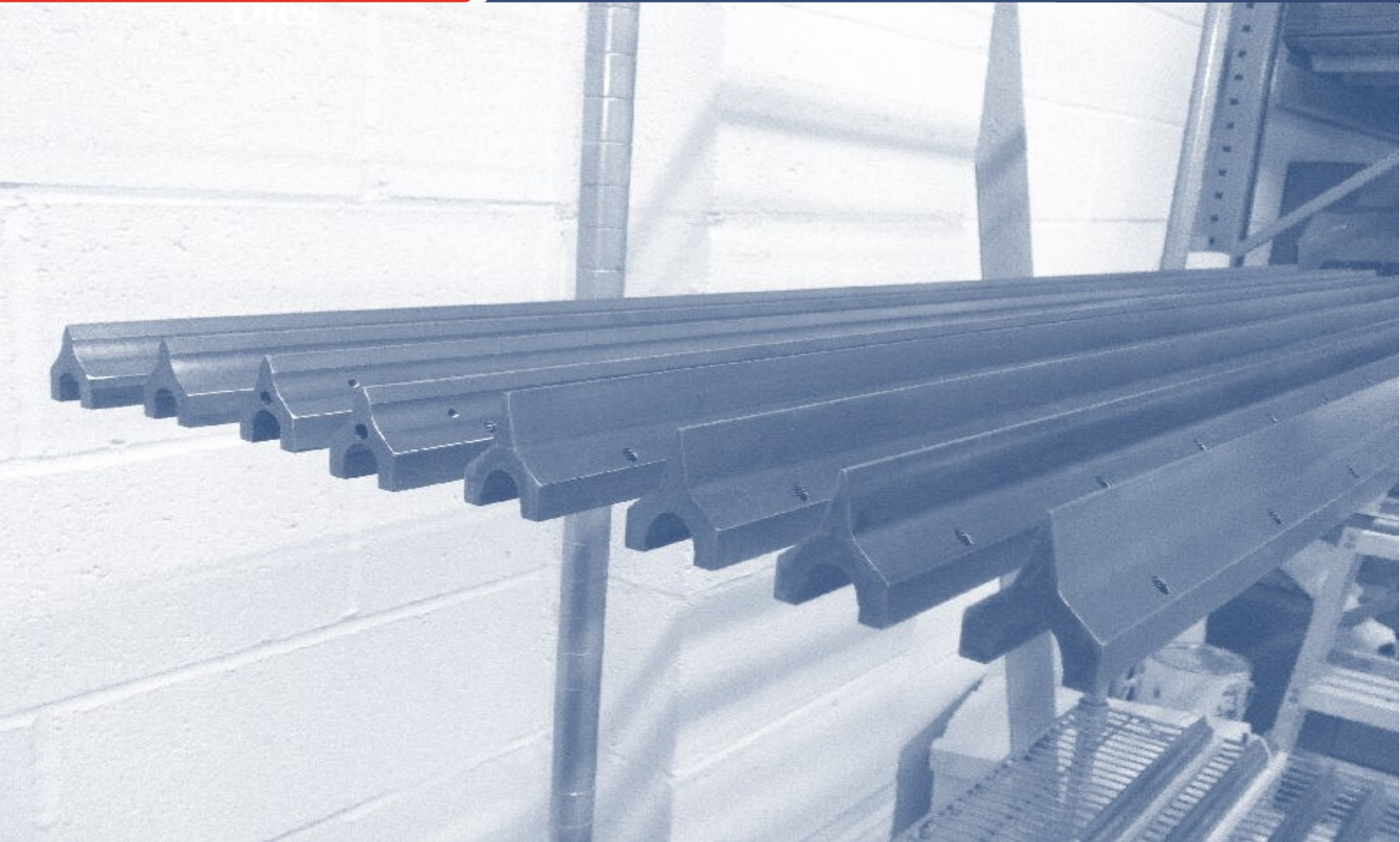
Part #	Description	Machine Type
7D0682	Thermocouple For Hudson Sharp - 30" long	FMC/Hudson Sharp
PS-4628	Thermocouple \emptyset .188 x 4.25" probe, 54" long lead	Polystar/Ro-An
PS-5048	Thermocouple 24" long	Polystar/Ro-An
S-25733	Thermocouple - (W754), 48" long lead	Scheldahl
TC-0072	Thermocouple 2 Prong coupling, 1/2" probe, 72" long	
TC-0072W	Thermocouple 2 Wire, 1/2" probe, 72" long	
TC-0098	Thermocouple, Screw Mount, 72" long	
TC-0120	Thermocouple 2 prong coupling, 1/4" probe, 120" long	
TC-0120L	Thermocouple 2 prong coupling, 1/2" probe, 120" long	
TC-0144	Thermocouple 2 prong coupling, 1/4" probe, 144" long	
TC-0144L	Thermocouple 2 prong coupling, 1/2" probe, 144" long	
TC-0192	Thermocouple 2 prong coupling, 1/2" probe, 192" long	
TC-0240	Thermocouple 2 prong coupling, 1/2" probe, 240" long	
Custom	Length, OD, Type, Lead Length,	MMS



CUSTOM THERMOCOUPLE

Specify Length
 Outside Diameter (OD)
 Type
 Lead Length
 Any additional requirements






Through our demanding requirements, our Hot Knife Tip Sealing Blades have the industry's best results in smoothness, resistance to coating media and durability. Our optimized design results in higher stability, which leads to improved overall durability and high pouch/bag quality.

As you can see from the following pages, BagMachineParts.com has a huge selection of Hot Knife Seal Blade Tips of various lengths and radiuses.



If you need help locating the right part for your production line, just send a email to: Sales@BagMachineParts.com and we'd be glad to assist you.

Note: a photo of the part is always helpful with our researching process.

Hot Knife Tip Seal Blades - 30"

Part #	Description	Machine Type	Images
PSW-110A	30" Hot Knife Tip Seal Blade 1/32" Radius - Polystar	Polystar/Ro-An	 <p>PSW-110A 30" Hot Knife Tip Seal Blade with 1/32" radius</p>
PSW-110B	30" Hot Knife Tip Seal Blade 3/64" Radius - Polystar	Polystar/Ro-An	
PSW-110AC	30" Hot Knife Tip Seal Blade 1/32" Radius - Chrome	Polystar/Ro-An	
S-24278	30" Hot Knife Tip Seal Blade 1/32" Radius	Scheldahl	
S-24278B	30" Hot Knife Tip Seal Blade 3/64" Radius	Scheldahl	
S-24278CH	30" Hot Knife Tip Seal Blade 1/32" Radius -Chrome	Scheldahl	
S-24278HR	30" Hot Knife Tip Seal Blade 1/16" Radius	Scheldahl	
S-24278PP	30" Hot Knife Tip Seal Blade 1/64" Radius - Chrome	Scheldahl	

Hot Knife Tip Seal Blades - 41"

Part #	Description	Machine Type	Images
PSW-1360AC	41" Hot Knife Tip Seal Blade 1/32" Radius - Chrome	Polystar/Ro-An	 <p>PSW-1360A 41" Seal Blade with 1/32" radius</p>  <p>PSW-1360C 41" Seal Blade with 1/64" radius</p>
PSW-1360A	41" Hot Knife Tip Seal Blade 1/32" Radius	Polystar/Ro-An	
PSW-1360B	41" Hot Knife Tip Seal Blade 3/64" Radius	Polystar/Ro-An	
PSW-1360C	41" Hot Knife Tip Seal Blade 1/64" Radius	Polystar/Ro-An	
PSW-1360CC	41" Hot Knife Tip Seal Blade 1/64" Radius - Chrome	Polystar/Ro-An	
S-00005	41" Hot Knife Tip Seal Blade	Scheldahl	
S-00005A	41" Hot Knife Tip Seal Blade 1/32" Radius	Scheldahl	
S-00005B	41" Hot Knife Tip Seal Blade 3/64" Radius	Scheldahl	
S-00005C	41" Hot Knife Tip Seal Blade 1/64" Radius	Scheldahl	
S-00005D	41" Hot Knife Tip Seal Blade 1/8" Radius	Scheldahl	
S-00005E	41" Hot Knife Tip Seal Blade 1/64" Radius	Scheldahl	
S-00005-1/64	41" Hot Knife Tip Seal Blade 1/64" Radius - No Chrome	Scheldahl	
S-00005-1/8 CHR	41" Hot Knife Tip Seal Blade 1/8" Radius Chrome	Scheldahl	
S-00005-1/32 CHR	41" Hot Knife Tip Seal Blade 1/32" Radius - Chrome	Scheldahl	
S-00005-3/32	41" Hot Knife Tip Seal Blade 3/32" Radius	Scheldahl	
S-00005-3/64C	41" Hot Knife Tip Seal Blade 3/64" Radius - Chrome	Scheldahl	
S-04666	41" Hot Knife Tip Seal Blade - Bottom Seal, Std Radius	Scheldahl	

Hot Knife Tip Seal Blades - 56"

Part #	Description	Machine Type
<i>PSW-1677A</i>	56" Hot Knife Tip Seal Blade 1/32" Radius	Polystar/Ro-An
<i>PSW-1677B</i>	56" Hot Knife Tip Seal Blade 3/64" Radius	Polystar/Ro-An
<i>S-06750A</i>	56" Hot Knife Tip Seal Blade 1/32" Radius	Scheldahl
<i>S-06750B</i>	56" Hot Knife Tip Seal Blade 3/64" Radius	Scheldahl
<i>S-06750C</i>	56" Hot Knife Tip Seal Blade 1/16" Radius	Scheldahl
<i>S-06750-B</i>	56" Hot Knife Tip Seal Blade - Blank	Scheldahl
<i>S-06750-3/64C</i>	56" Hot Knife Tip Seal Blade 3/64" Radius - Chrome	Scheldahl
<i>S-06750-1/32CHR</i>	56" Hot Knife Tip Seal Blade 1/32" Radius - Chrome	Scheldahl
<i>S-06750-1/64</i>	56" Hot Knife Tip Seal Blade 1/64" Radius	Scheldahl
<i>S-06750-1/8</i>	56" Hot Knife Tip Seal Blade 1/8" Radius	Scheldahl
<i>S-06750-3/32</i>	56" Hot Knife Tip Seal Blade 3/32" Radius	Scheldahl
<i>S-06750PP</i>	56" Hot Knife Tip Seal Blade 1/64" Radius - Chrome, Poly Pro	Scheldahl
<i>S-8209</i>	56" Scheldahl Bottom Seal Blade	Scheldahl



S-06750C

56" Hot Knife Seal Blade with 1/16" radius



S-06750B

56" Hot Knife Seal Blade with 3/64" radius

Stripper Fingers

Part #	Description	Machine Type
<i>9D05319</i>	Finger	FMC/Hudson Sharp
<i>S-01036</i>	Finger - Short (same as RA-2859, S-13219)	Scheldahl/Polystar/RO-AN
<i>S-22455</i>	Finger - Long (same as RA-2858)	Scheldahl/Polystar/RO-AN
<i>PS-11671</i>	Air Finger	Polystar/RO-AN
<i>S-44439</i>	Air Nozzle for Blow Down - Short (Aluminum)	Polystar/RO-AN
<i>S-44439L</i>	Air Nozzle for Blow Down- Long (Aluminum)	Polystar/RO-AN
<i>204668</i>	Nozzle Tips	MMS
<i>PS-4525</i>	Nozzle Tips	Polystar/RO-AN
<i>S-00362</i>	Hot Knife Support	Scheldahl, Polystar/RO-AN



204668
Nozzle



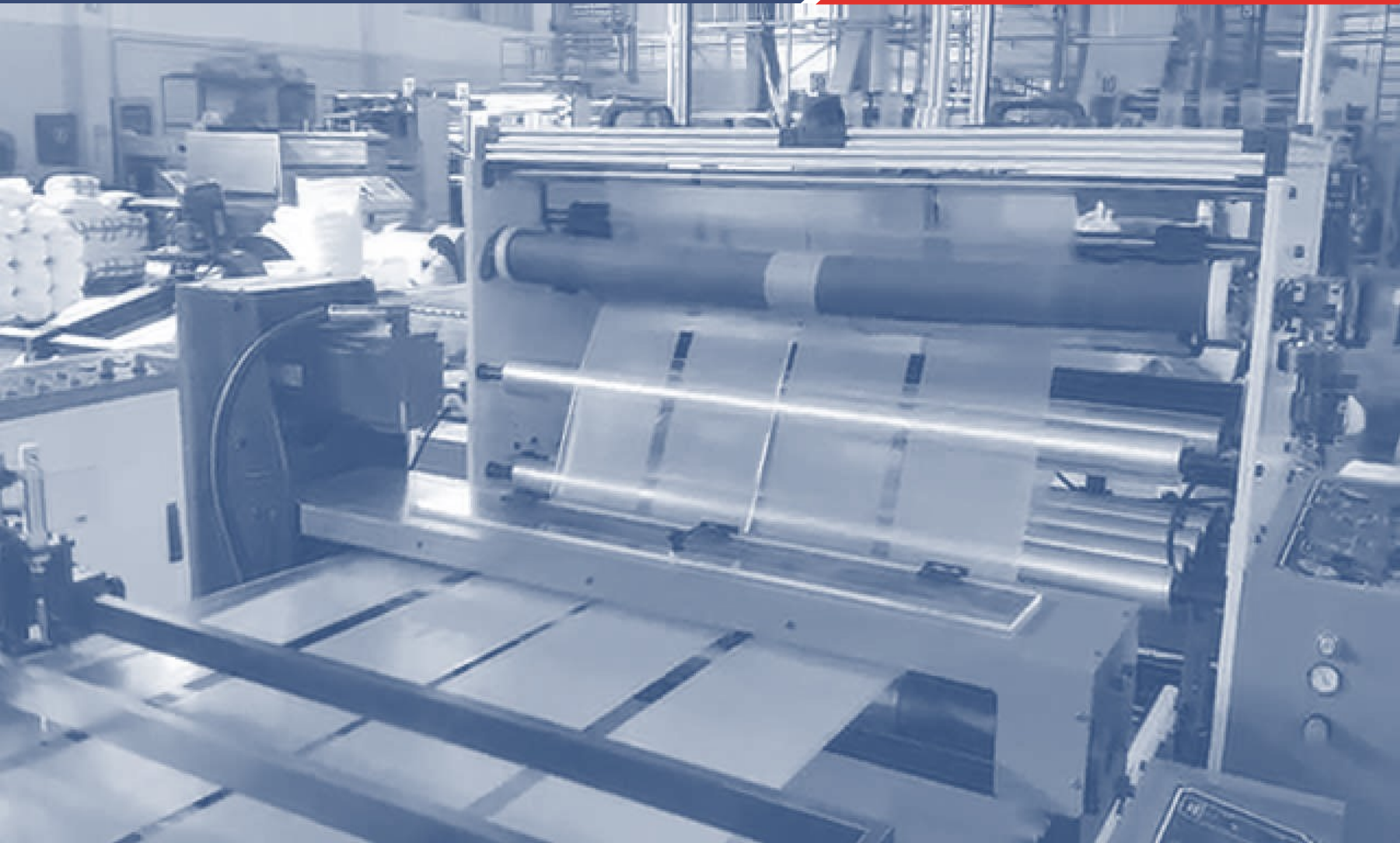
S-00362
Hot Knife Support



S-22455
Finger Long



PS-11671
Roan Air Finger



A Slit Seal's primary purpose is to prevent cross-contamination and solvent evaporation.

Our Slit Seals are designed and manufactured to provide optimal performance by minimizing production issues.

Slit Seals

Part #	Description	Machine Type
A10112228	Slit Seal Knife - Small—1.5 inches wide	Gloucester
A01010060002	Slit Seal Knife - Large—2.0 inches wide	Gloucester
BMP-2HD	#2 Slit Seal - Heavy Duty Slit Seal Blade for 3/4 to 1 mil low density film	
BMP-4HD	#4 Slit Seal - Heavy Duty Slit Seal Blade for 1 to 2 mil low density film	
BMP-6HD	#6 Slit Seal - Heavy Duty Slit Seal Blade for 2 to 3 mil low density film	
BMP-8HD	#8 Slit Seal - Heavy Duty Slit Seal Blade for 3 to 4 mil low density film	



A10112228
Slit Seal - Small



BMP-2HD
#2 Slit Seal-Heavy Duty for 3/4 to 1 mil low density film



A01010060002
Slit Seal - Large



Eliminating the static generated in a flexible packaging or bag production line, is essential to achieving optimal productivity. Unwanted electrostatic charges can cause a number of costly process, quality or safety issues; material jams, clogs, mis-feeds, poor stacking, reduced transport speeds, shock to operators, etc.

Our line of static eliminator bars are, linear air ionizers, that generate a dense field of positive & negatively charged air ions. Exposing materials to this field efficiently neutralizes electrostatic charges that can cause many of the issues described previously.

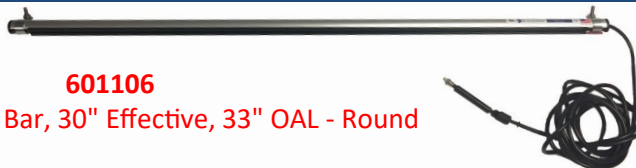
We have anti-static bars in both round and rectangular shapes in various lengths to match most equipment requirements.

If you need help in choosing a static eliminator bar or power supply, just send an email to: Sales@BagMachineParts.com and we'd be glad to assist you.

Note: a photo of the part is always helpful with our researching process.

Anti-Static Bars—Round

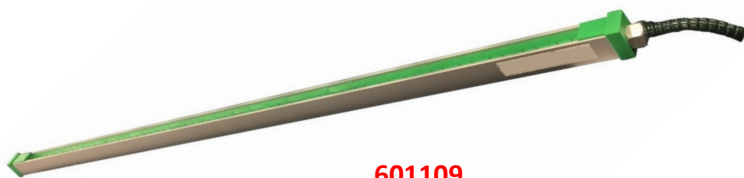
Part #	Description
601105	Static Eliminator Bar, 24" Effective, 27" OAL - Round
601106	Static Eliminator Bar, 30" Effective, 33" OAL - Round
601107	Static Eliminator Bar, 42" Effective, 45" OAL - Round
601108	Static Eliminator Bar, 57-3/4" Effective, 60" OAL - Round



601106
Static Eliminator Bar, 30" Effective, 33" OAL - Round

Anti-Static Bars—Rectangular

Part #	Description
601109	Static Eliminator Bar, 24-3/4" Effective, 25-3/4" OAL - Rectangular
601110	Static Eliminator Bar, 30-3/4" Effective, 31-3/4" OAL - Rectangular
601111	Static Eliminator Bar, 42" Effective, 43" OAL - Rectangular
601112	Static Eliminator Bar, 57-3/4" Effective, 58.75" OAL - Rectangular
Tinsel	Anti static Tinsel 72' per box - 1 1/4" diameter



601109
Static Eliminator Bar, 24-3/4" Effective, 25-3/4" OAL - Rectangular



Anti-static Tinsel

Anti-Static Bars—Power Supplies

Part #	Description
600568	7.5 kV, 115/230V, 50/60 Hz power supply - W/6' cord & plug, 2 output ports, 2 static bars
601113	7.5 kV, 115/230V, 50/60 Hz power supply - W/6' cord & plug, 4 output ports, 4 static bars



60056
7.5 kV, 115 /230V, 50/60
Hz power supply




Side Weld machines are designed to be incredibly durable however, there are still wear parts that need replacement over time.

Here at BagMachineParts and through our parent company (Modern Manufacturing Services) we have the exclusive rights to manufacture Scheldahl Side Weld Bag machines. With this in mind, we maintain a large inventory of Scheldahl and other side weld parts.


If you are not sure which side weld parts you need, we can help you research the correct parts. Just send an email to: Sales@BagMachineParts.com and we'd be glad to assist you.

Note: a photo of the part is always helpful with our researching process.

Wicket Parts

Part #	Description	Machine Type	Images
PSW-0148	Wicket Pin	Ro-An	 <p>PSW-0148 Wicket Pin</p>
S-44406	Wicket Pin		
S-44406-N	Wicket Needle		

Vacuum Arms

Part #	Description	Machine Type	Images
S-50326	20" Vacuum Arm RH	Scheldahl	 <p>S-43904 Vacuum Arm 14" LH</p>
S-50327	20" Vacuum Arm LH	Scheldahl	
S-43906	16" Vacuum Arm RH	Scheldahl	
S-43907	16" Vacuum Arm LH	Scheldahl	
S-43904	14" Vacuum Arm LH	Scheldahl	
S-43905	14" Vacuum Arm RH	Scheldahl	

Wicket Conveyor Parts

Part #	Description	Machine Type	Part #	Description	Machine Type
S-44311-7	7" Rope Belt, 3/16" diameter	Scheldahl	S-44311-70	70" Rope Belt, 3/16" diameter	Scheldahl
S-44311-16	16" Rope Belt, 3/16" diameter	Scheldahl	S-44311-72	72" Rope Belt, 3/16" diameter	Scheldahl
S-44311-20	20" Rope Belt, 3/16" diameter	Scheldahl	S-44311-73	73" Rope Belt (same as 6C097203), 3/16" diameter	Scheldahl
S-44311-36	36" Rope Belt, 1/4" diameter	Scheldahl	S-44311-80	80" Rope Belt, 3/16" diameter	Scheldahl
S-44311-43	43" Rope Belt, 3/16" diameter	Scheldahl	S-44311-100	100" Rope Belt, 3/16" diameter	Scheldahl
S-44311-44	44" Rope Belt, 1/4" diameter	Scheldahl	S-44311-111	111" Rope Belt, 3/16" diameter	Scheldahl
S-44311-48	48" Rope Belt,, 3/16" diameter	Scheldahl	S-50036	Rope Pulley Plate	Scheldahl
S-44311-50	50" Rope Belt	Scheldahl	S-50037	Rope Plate Clamp	Scheldahl
S-44311-52	52" Rope Belt	Scheldahl	S-50038	Dual Pulley Shaft	Scheldahl
S-44311-54	54" Rope Belt	Scheldahl	S-50041	Rope Belt Pulley, Nylon spindle	Scheldahl
S-44311-58	58" Rope Belt	Scheldahl	403666	Rope Belt Pulley-4 rope	Hudson-Sharp
S-44311-60	60" Rope Belt, 3/16" diameter	Scheldahl	403684	Rope Belt Pulley-3 rope	Hudson-Sharp
S-44311-62	62" Rope Belt	Scheldahl	403667	Rope Belt Pulley-2 rope	Hudson-Sharp
S-44311-68	68" Rope Belt	Scheldahl	403685	Rope Belt Pulley	RO-AN



S-44311-72
72" Rope Belt



S-44311-52
52" Rope Belt



S-50041
Rope Belt Pulley

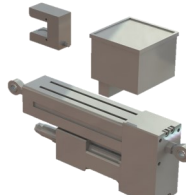


Our Web Control Accessories are specifically designed to assist your production line in maintaining optimal registration, while eliminating potential converting issues (ie. wrinkling).

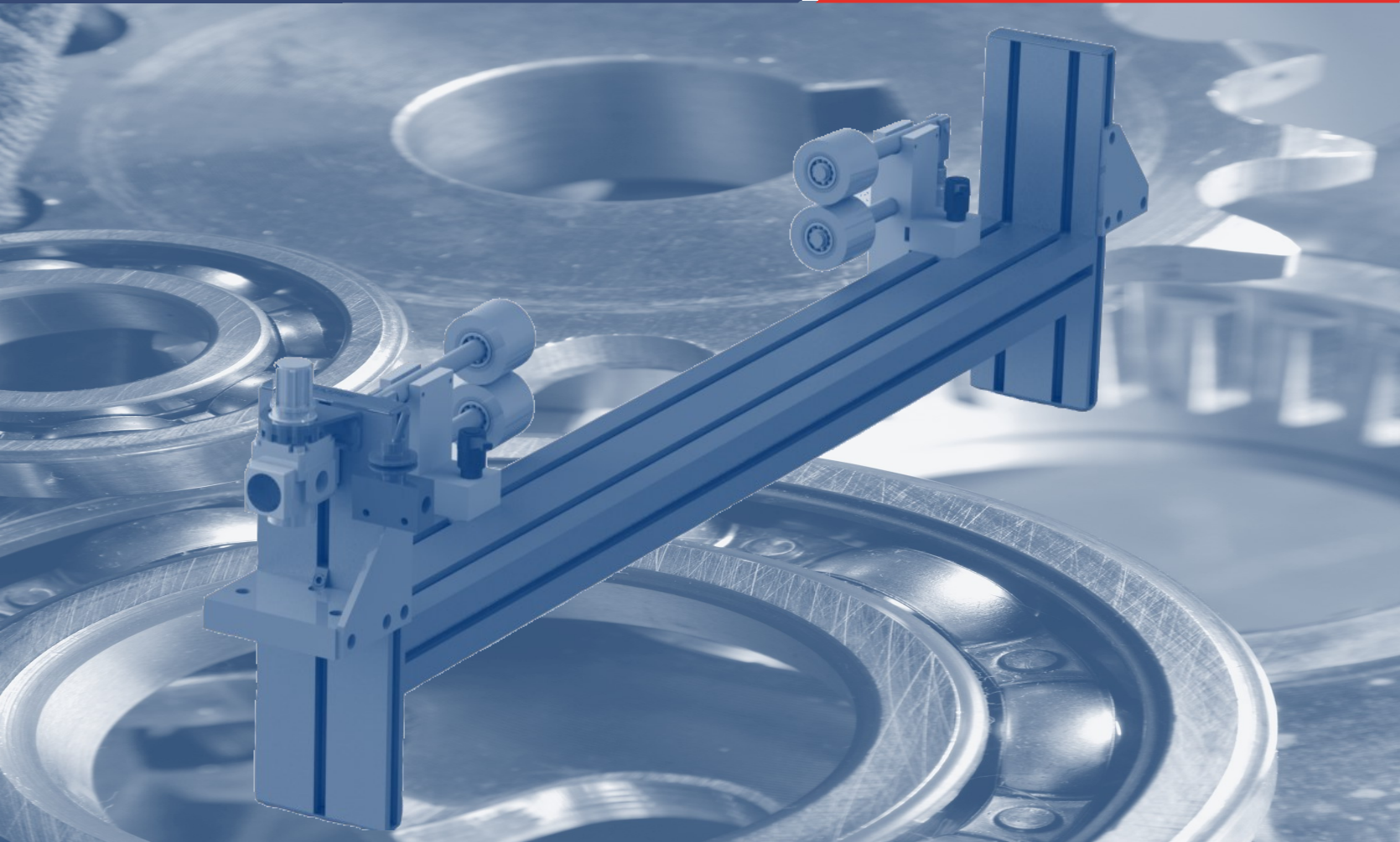
Adjustable position pressure rollers are available in virtually any web width and are designed to fit in prior to any nip in-feed.

If you need help locating the right web control accessory for your production line, just send an email to: Sales@BagMachineParts.com and we'd be glad to assist you.

Web Control Accessories

Part #	Description	Machine Type	Images
<i>S-05147</i>	41" Web Spreader Assembly	Scheldahl	 <p>SE0004 Edge Guide</p>
<i>AM21007</i>	24" Web Tracking Guide	MMS	
<i>AM26008</i>	24" Web Spreader, Mechanical	MMS	
<i>AM26011</i>	55" Web Spreader, Air-loaded	MMS	
<i>SE00004</i>	Edge Guide Assembly	MMS	

Web Control Units are available to meet width requirements per customer's machine specifications



Our Air Tensioned Web Spreader is designed to minimize or eliminate many of the web related issues when running today's difficult films.

The new air tensioned web spreader works with pressurized nips creating a spreading effect across the width of the film.

The pressure rollers are adjustable for virtually any web width and it is designed to fit in prior to any nip in-feed

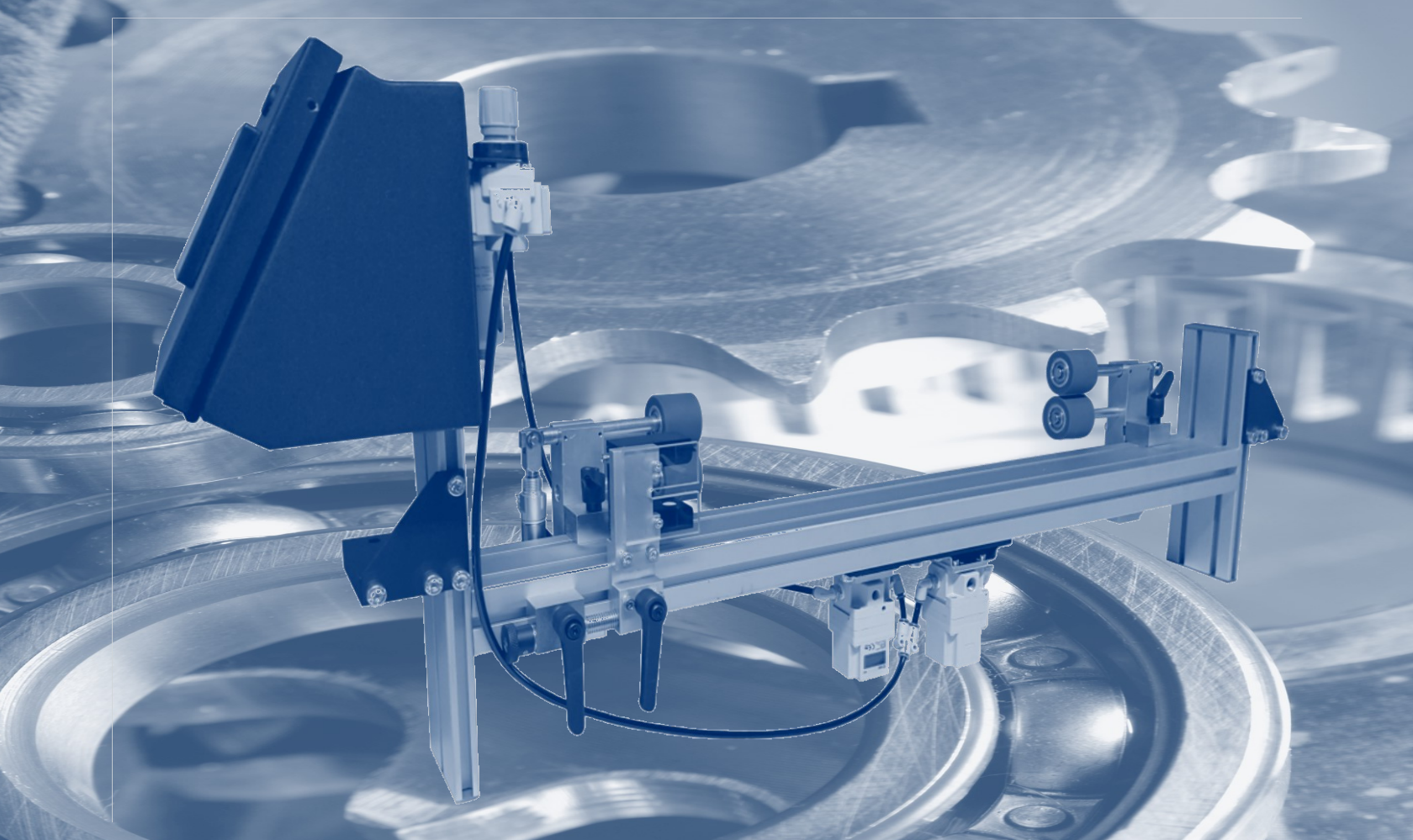
Perfect for film processing that needs intermediate web spreading, including:

- ✓ Pouch making machines
- ✓ Bag making machines
- ✓ Extrusion lines
- ✓ Laminating
- ✓ Rewinding
- ✓ Printing

In addition, we can customize the fit to any application.

General Specifications

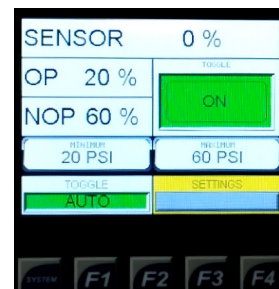
Max Web Width	Designed to your specifications
Web Height	7" above to 3.1" below frame rail
Air Requirements	80 PSI .5 SCFM



Our web tracking guide allows for flattening of any film, while providing an edge guiding function. This system basically steers the film, using ultrasonic edge sensor detection and a proportional electronic valve.

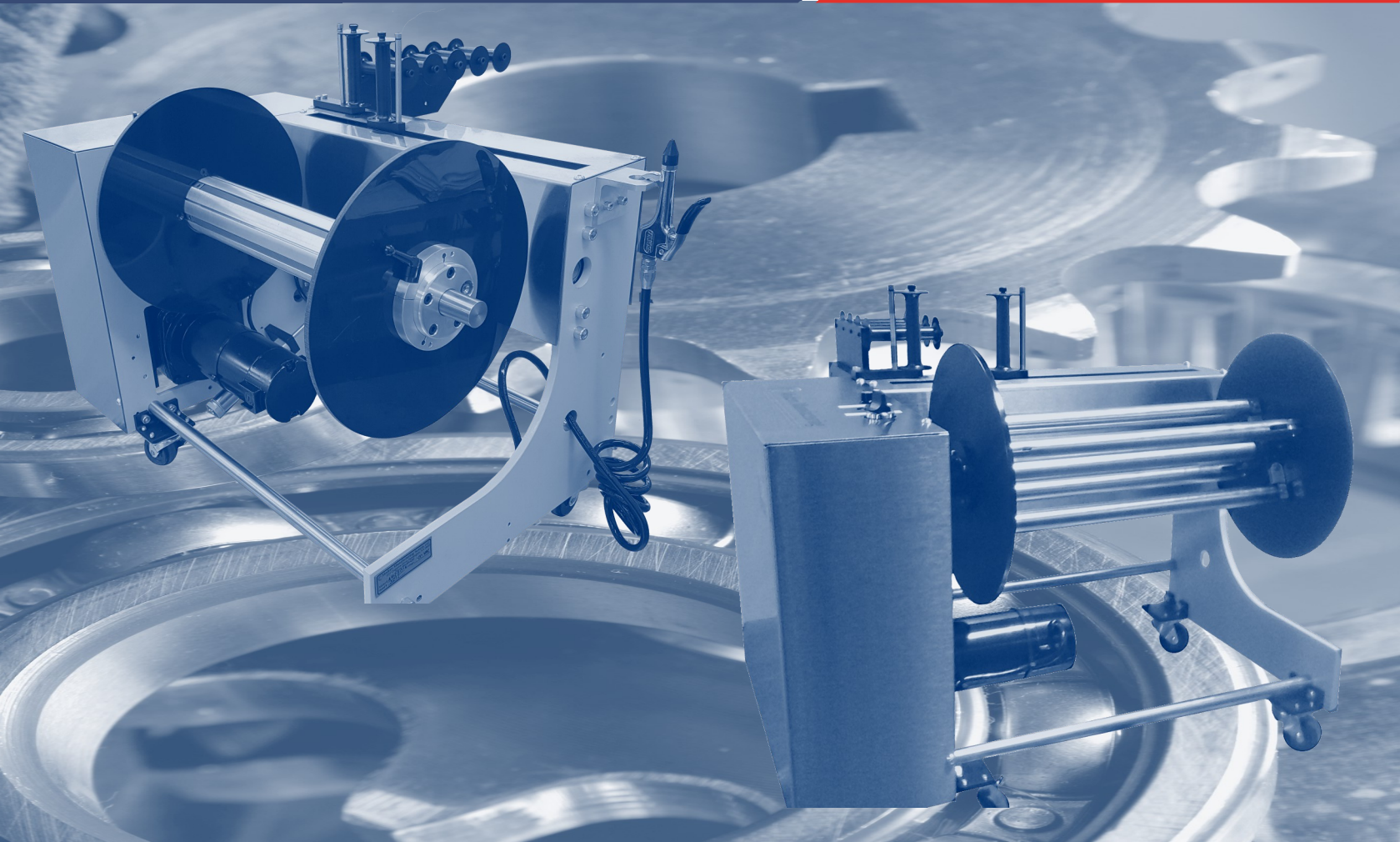
This system can be easily customized to fit any application.

Set-up is made easy with the high resolution Color Graphics Display with both functional buttons and a touchscreen with a simple design.



General Specifications

Max Web Width	Designed to your specifications
Web Height	7" above to 3.1" below frame rail
Electrical Requirements	110 or 220 VAC
Air Requirements	80 PSI .5 SCFM



Our Trim Rewinders are a simple and sturdy, design that work with almost any converting line.

Each Trim Rewinder includes a 'built-in' dancer for intermittent motion systems. Tension adjustments for rewriter can be easily and quickly performed.

Our design also includes traverse wind that allows high linear footage on the rewriter.

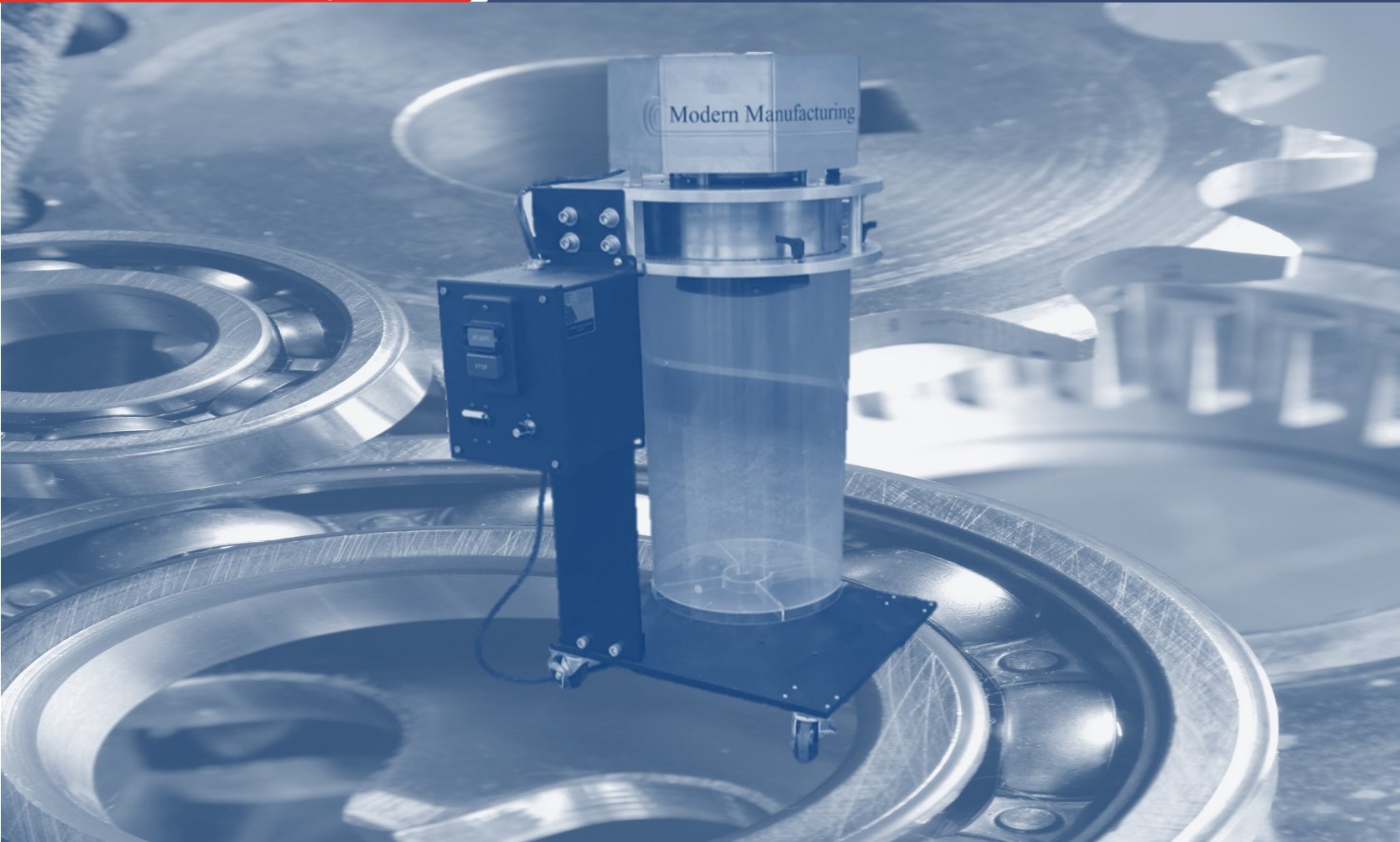
We even make unloading easy with a standard collapsible coreless shaft.



General Specifications

Machine Speed	200 feet per minute / custom speeds available upon request
Machine Dimensions	28" (711 MM) / 28" (711 MM) / 28" (711 MM)
Max Trim Width	3" (76 MM) / wider widths available upon request
Wind Dimensions	16" (406 MM) diameter / wind width 15 inch (381 MM)
Power Requirements	110 or 220 VAC / 8 AMP (110 VAC) 4 amp (220 VAC)

MSVS Punch Slug Vacuum System



Many of our customers, have long searched for a reliable and efficient means of removing punch slugs from their bag/pouch making production lines. They have often expressed to us their inability to find a vacuum solution that would work with all of their materials

The MSVS Punch Slug Vacuum System works with any film, at any production speed. This extremely robust waste removal system is easily adapted to any production line producing converted products that require punching or venting.

General Specifications

3 Speed, 1100W vacuum motor for efficient cyclone action	Available in 120V-240V, 50/60Hz (specify voltage with order)
1-1/2" Hose services up to 4 ports removing punch slugs up to 1" wide	Brushless motor for long life and zero maintenance
Large, clear collection canister easy to monitor full status	No maintenance wire mesh filter with washable pre-filter
Easy to remove & replace collection canister	Custom punch adapters available upon request



Regular cleaning of plastic extrusion dies and inspection for damage is necessary to ensure the quality of products, reduce scrap and extend the life of the die. We offer a full range of cleaning products that designed to keep you extrusion systems running at optimal productivity.

If you are not sure which extrusion cleaning products you need or you need a quote, we can help you research the correct products. Just send an email to: Sales@BagMachineParts.com and we'd be glad to assist you.

Note: a photo of the part is always helpful with our researching process.



Extrusion Cleaning Products

Part #	Description
7 Compound - 8 lb.	Release Compound 7 - 8lb bucket
7 Compound - Tube	Release Compound 7 - 5.3 ounce tube
AA Die Soap - 12 bars/case	Die Soap - 12 bars/case (Primary ingredient: Silica)
Die Soap - Case of 10 Bars	Die Soap (Case of 10 Bars) (Primary ingredient Amorphous Aluminum Silicate)
EXOSP_0060	60 Mesh, Outside Diameter 1.625" x 4.375"
EXOSP_0080	80 Mesh, Outside Diameter 1.625" x 4.375"
EXOSP_0070	3 5/8" Diameter 20-40-20 Stainless Steel with 4 Spot Welds
EXOSP-0034	3 5/8" Diameter 20-40-80-100 Stainless Steel Mesh
EXOSP_0033	3 5/8" Diameter 20-50-50-80 Stainless Steel Mesh with 4 Spot Welds
EXOSP-0001	2 1/4" Diameter 20-40-80-100 stainless steel
EXOSP_0003	3" Diameter 20-40-80-100 stainless steel
EXOSP_0004	3 5/8" Diameter 20-40-80 steel
EXOSP_0005	3.661" Diameter 20x40x80 stainless steel
EXOSP_0006	5 7/8" Diameter 20x40x20 steel
EXOSP_0007	4 7/8" Diameter 20x40x80 stainless steel
S-CM400	400' Roll of copper mesh



7 Compound Tube
Release Compound 7-5.3 ounce tube



Die Soap
Case of 10 Bars



EXOSP-0001
2 1/4" 20-40-80-100 Stainless
Steel



S-CM400
400' Roll of Copper Mesh



EXOSP-0004
3 5/8" 20-40-80 Stainless
Steel



Our dies are designed for numerous pouch machine applications, including:

- Straight dies
- Doyen seal dies
- Shaped platen seal dies
- Angle seal dies
- Chevron seals
- Fitment seals
- Medical applications
- Shapes and 3D profiling

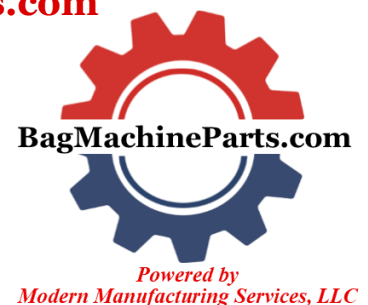
We use only thermally stable materials that resist warping during the heating and cooling process.

In addition, heat expansion algorithms are applied to seal designs to ensure proper dimensions at temperature.

We use either aluminum or steel substrate dies for the extreme temperature requirements. Our dies are designed to fit your existing production equipment.

To request a quote, please complete the attached form at

www.heatsealdies.com



Note: an electronic version of this form can be found at www.heatsealdies.com. Once the form is completed please forward via email to: sales@modernmfg.net

Seal Die Requirements Form

Customer: Click here to enter text.
Contact Name: Click here to enter text.
Contact Phone: Click here to enter text.
Fax: Click here to enter text.
Email: Click here to enter text.
Date of Inquiry: Click here to enter a date.
Date Equipment is required: Click here to enter a date.

Seal Die Requirements

- | | |
|---|---|
| <input type="checkbox"/> Inline seal die | <input type="checkbox"/> Doyn seal die |
| <input type="checkbox"/> Cross Seal | <input type="checkbox"/> K-seal die |
| <input type="checkbox"/> Zipper seal die | <input type="checkbox"/> Angle seal die |
| <input type="checkbox"/> Platen seal die. | |

Seal Die Information

Quantity required: Click here to enter text.
Seal width: Click here to enter text.
Seal length: Click here to enter text.

Platen Seal Die Information

Quantity required: Click here to enter text.
Seal width: Click here to enter text.
Seal length: Click here to enter text.
Seal layout: Click here to enter text.
How many seals across: Click here to enter text.
(1-up, 2-up, etc.)
How many seals deep: Click here to enter text.
1 row, 2 rows, etc.)

NOTE: Must provide shape details: Click here to enter text.

Material Information

Material type: Click here to enter text.
Material thickness: Click here to enter text.
Number of layers being sealed at one time: Click here to enter text.

Machine Specifications

Machine Brand: Click here to enter text.
 14" 24" 30" Retrofit
 Custom: Click here to enter text.
Manufacturer: Click here to enter text.
Serial Number: Click here to enter text.
(If available)
Existing seal die dimensions: Click here to enter text.

Additional Customer Notes

Click here to enter text.